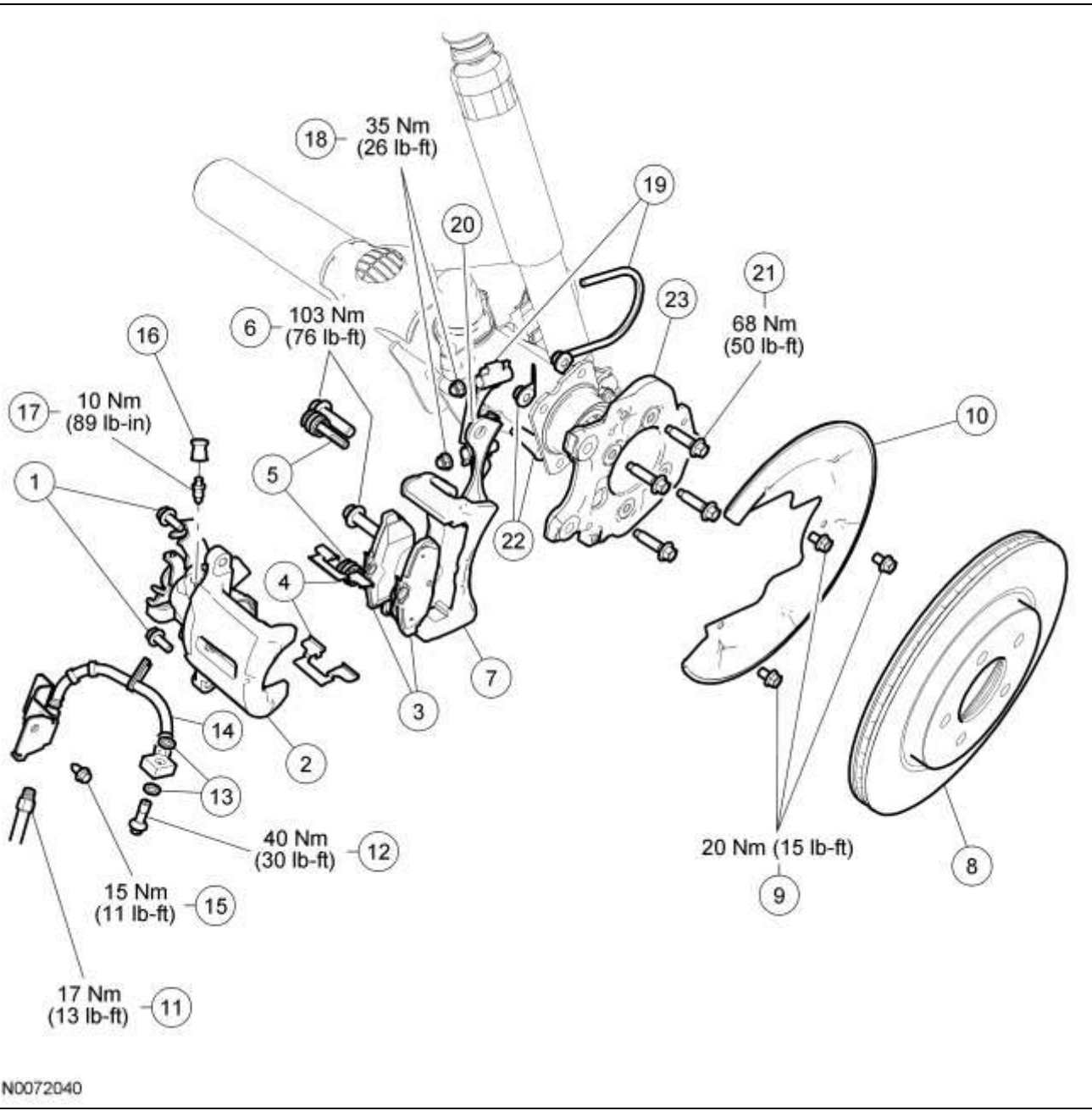


Disc Brake System — Exploded View

NOTE: 4.0L SOHC and 4.6L (3L) shown, 5.4L similar.



N0072040

Item	Part Number	Description
1	2N386	Brake caliper guide pin bolts
2	2552 RH/ 2553 LH	Brake caliper
3	2218	Brake pads (kit)

4	—	Spring clips (part of kit 2200)
5	—	Guide pin and boot (part of kit 2B296)
6	W705821	Brake caliper anchor plate bolt kits (2 bolts each side)
7	2B511	Brake caliper anchor plate
8	2C026	Brake disc
9	W500020	Brake disc shield bolts (3 required) (part of 2C029)
10	2C029	Brake disc shield
11	—	Brake tube fitting (part of 2268)
12	W712275	Brake caliper flow bolt
13	W712362	Copper washers (2 required)
14	2A442 RH/ 2A478 LH	Brake hose
15	N802191	Brake hose bracket bolt
16	—	Bleeder screw cap (part of 2N033)
17	2N033	Bleeder screw
18	W520112	Anti-moan bracket U-bolt nuts (2 required)
19	—	Anti-moan bracket U-bolt and clamp (part of 2C371)
20	2C371	Anti-moan bracket (4.0L SOHC and 4.6L [3V] only)
21	—	Brake caliper support bracket bolts (4 required) (part of 4001)
22	—	Brake caliper support bracket flag nuts (4 required) (part of 4001)
23	—	Brake caliper support bracket (part of 4001)

1. For additional information, refer to the procedures in this section.

