



# Shadow Series™

## Cutter type swivel fittings for use with stainless steel braided hose

When maximum performance and durability is required, Mr. Gasket swivel fittings deliver. These fittings are good up to 1000 PSI and are compatible with virtually all automotive chemicals.

### STRAIGHT SWIVEL



Size	Part #
-4 AN	S4
-6 AN	S6
-8 AN	S8
-10 AN	S10

### 120° SWIVEL FITTING



Size	Part #
-4 AN	F1204
-6 AN	F1206
-8 AN	F1208
-10 AN	F12010

### 45° SWIVEL FITTING



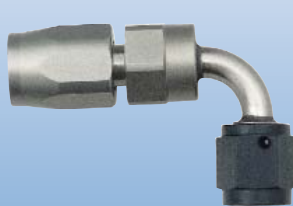
Size	Part #
-4 AN	F454
-6 AN	F456
-8 AN	F458
-10 AN	F4510

### 150° SWIVEL FITTING



Size	Part #
-4 AN	F1504
-6 AN	F1506
-8 AN	F1508
-10 AN	F15010

### 90° SWIVEL FITTING



Size	Part #
-4 AN	F904
-6 AN	F906
-8 AN	F908
-10 AN	F9010

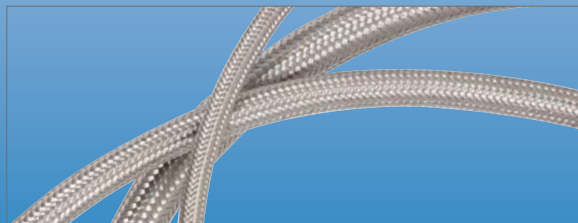
### 180° SWIVEL FITTING



Size	Part #
-4 AN	F1804
-6 AN	F1806
-8 AN	F1808
-10 AN	F18010



### STAINLESS STEEL BRAIDED HOSE



#### 4 Feet

-4 AN	S44
-6 AN	S46
-8 AN	S48
-10 AN	S410

#### 10 Feet

-4 AN	S104
-6 AN	S106
-8 AN	S108
-10 AN	S1010

#### 25 Feet

-4 AN	S254
-6 AN	S256
-8 AN	S258
-10 AN	S2510

## Push-on type fittings for use with rubber push-on hose

These fittings are a great alternative to the stainless cutter type fitting. They're lighter weight, and easier to assemble, yet still good to 250 PSI.

# Shadow Series™

### STRAIGHT PUSH-ON



Size	Part #
-4 AN	P4
-6 AN	P6
-8 AN	P8
-10 AN	P10

### 120° PUSH-ON FITTING



Size	Part #
-4 AN	P1204
-6 AN	P1206
-8 AN	P1208
-10 AN	P12010

### 45° PUSH-ON FITTING



Size	Part #
-4 AN	P454
-6 AN	P456
-8 AN	P458
-10 AN	P4510

### 150° PUSH-ON FITTING



Size	Part #
-4 AN	P1504
-6 AN	P1506
-8 AN	P1508
-10 AN	P15010

### 90° PUSH-ON FITTING



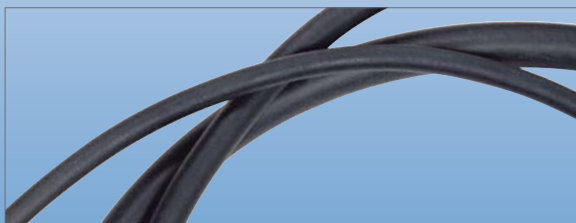
Size	Part #
-4 AN	P904
-6 AN	P906
-8 AN	P908
-10 AN	P9010

### 180° PUSH-ON FITTING



Size	Part #
-4 AN	P1804
-6 AN	P1806
-8 AN	P1808
-10 AN	P18010

### RUBBER PUSH-ON HOSE



#### 10 Feet

-4 AN	R104
-6 AN	R106
-8 AN	R108
-10 AN	R1010

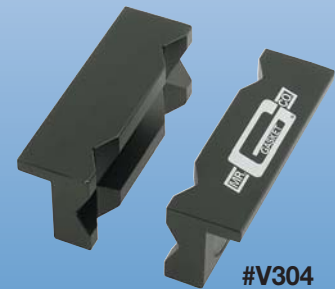
#### 4 Feet

-4 AN	R44
-6 AN	R46
-8 AN	R48
-10 AN	R410

#### 25 Feet

-4 AN	R254
-6 AN	UNAVAILABLE
-8 AN	R258
-10 AN	R2510

**NEW!**  
Anodized Aluminum Vice  
Jaws That Do Not Scratch  
Your Fittings During Assembly!



#V304

Hex Grooves Allow Fittings to be  
Gripped on Flats to Protect Corners

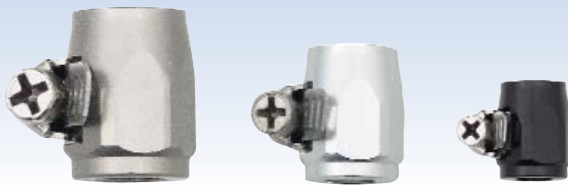
## Pipe Thread Adaptors

When your plumbing job requires a conversion from NPT threads to AN style fittings, these adaptors have you covered. All adaptors are anodized black.

Image	Pipe Thread Size	AN Size	Part #
	1/4"	-4	A144
	1/8"	-4	A184
	1/8"	-6	A186
	1/4"	-6	A146
	3/8"	-6	A386
	3/8"	-8	A388
	3/8"	-10	A3810
	1/2"	-10	A1210
	1/2"	-8	A128

## Hose Finishers

Our Shadow series hose finishers come in both our unique black and titanium anodized colors, as well as a clear anodized finish. These finishers can be used in conjunction with our push on fittings for the swivel look, or anywhere else you'd use a hose clamp.



## Weld In Bungs

These aluminum bungs come un-anodized for optimal weld adhesion. They also have a centering ring to make welding them in a snap.

Image	AN Size	Part #
	-4 AN	W4
	-6 AN	W6
	-8 AN	W8
	-10 AN	W10
	-16 AN	W16
	-20 AN	W20

Size	Style	Part #
-4 (1/4" ID)	Titanium	E41
	Clear	E42
	Black	E43
-6 (3/8" ID)	Titanium	E61
	Clear	E62
	Black	E63
-8 (1/2" ID)	Titanium	E81
	Clear	E82
	Black	E83
-24 (1 1/2" ID)	Titanium	E241
	Clear	E242
	Black	E243
-32 (2" ID)	Titanium	E321
	Clear	E322
	Black	E323

## Couplings, Unions and Plugs

Mr. Gasket swivel couplings, AN unions and reducers simplify complex plumbing jobs such as fuel regulators, multiple pumps, etc. These parts all feature the unique Shadow Series look enabling you to do most projects start to finish with our high tech color scheme.

### SWIVEL COUPLING



Size	Part #
-4 AN	SC4
-6 AN	SC6
-8 AN	SC8
-8 to -6 AN	SC86

### 45° SWIVEL COUPLING



Size	Part #
-6 AN	SC6A
-8 AN	SC8A

### 90° SWIVEL COUPLING



Size	Part #
-6 AN	SC6B
-8 AN	SC8B

### PLUGS



Size	Part #
-4 AN	SP4
-6 AN	SP6
-8 AN	SP8
-10 AN	SP10

### AN TO AN UNION



Size	Part #
-4 AN	A4
-6 AN	A6
-8 AN	A8
-10 AN	A10
-6 to -4 AN	A64
-8 to -6 AN	A86

### 90° AN TO AN UNION



Size	Part #
-4 AN	A904
-6 AN	A906
-8 AN	A908

### FLARE REDUCERS



Size	Part #
-6 to 4 AN	SR64
-8 to 6 AN	SR86
-10 to 6 AN	SR106
-10 to 8 AN	SR108
-12 to 8 AN	SR128
-12 to 10 AN	SR1210

### AN MALETEE



Size	Part #
-6 AN	AT6
-8 AN	AT8

### Pipe to AN 90°



Pipe Thread Size	AN Size	Part #
1/4"	-4	A144B
1/8"	-4	A184B
1/8"	-6	A186B
1/4"	-6	A146B
3/8"	-6	A386B
3/8"	-8	A388B
3/8"	-10	A3810B
1/2"	-8	A128B

### Pipe to AN 45°



Pipe Thread Size	AN Size	Part #
1/4"	-4	A144A
1/8"	-4	A184A
1/8"	-6	A186A
1/4"	-6	A146A
3/8"	-6	A386A
3/8"	-8	A388A
3/8"	-10	A3810A
1/2"	-8	A128A

### Metric to AN Adaptors



Pipe Thread Size	AN Size	Part #
8mm x 1.5	-4	A84M
10mm x 1.25	-4	A104M
10mm x 1.5	-4	A154M
10mm x 1.25	-6	A106M
10mm x 1.5	-6	A156M
12mm x 1.5	-6	A126M
14mm x 1.5	-6	A146M
12mm x 1.5	-8	A128M
14mm x 1.5	-8	A148M
14mm x 1.5	-10	A1410M
16mm x 1.5	-10	A1610M

### Carburetor Adaptors



Pipe Thread Size	AN Size	Part #
Carter/Edelbrock	5/8 - 20	-6 A586
Single inlet Holley	9/16 - 24	-6 A9166
Dual inlet - short	7/8 - 20	-6 A7861
Rochester	7/8 - 20	-6 A7862
Dual inlet - std	7/8 - 20	-8 A7881
Dual inlet - extd	7/8 - 20	-8 A7882
Rochester 75 up	1 x 20	-6 A1206
Weber	10mm x 1	-6 A1016

### Plan-O-Grams

Mr. Gasket Shadow Series parts are available in two convenient plan-o-grams. Both swivel and push-on style hoses, hose ends, and pipe thread adaptors are all included on these plan-o-grams. Designed to make entering or expanding a performance plumbing business easy, these plan-o-grams feature all the most popular parts. For more information and pricing, please contact your Mr. Gasket Performance Distributor.



#P0007 or #P0008

**2 Options Available for Push-On Hose Fitting Planograms**

- P0007 - One (1) of each Fitting on a Peg **SAVE 5%**
- P0008 - Two (2) of each Fitting on a Peg **SAVE 10%**



#S0007 or #S0008

**2 Options Available for AN Hose Fitting Planograms**

- S0007 - One (1) of each Fitting on a Peg **SAVE 5%**
- S0008 - Two (2) of each Fitting on a Peg **SAVE 10%**



Mr. Gasket is a division of Prestolite Performance  
Cleveland, Ohio

©2009 Printed in USA

www.mr-gasket.com

74422G

