


Boss® 302 Unique Features

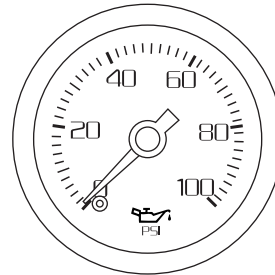
PERFORMANCE GAUGES

Your vehicle may be equipped with a dash mounted gauge pack that contains oil pressure, engine coolant temperature, and performance gauges.

 **WARNING:** The performance gauge function should only be used while in a track environment. The driver's primary responsibility is the safe operation of their vehicle, only use this feature when it is safe to do so.

Oil pressure gauge - measures oil pressure from 0-100 psi (0-689 kPa)

Note: It is normal for the oil pressure to read high (80 -100 psi) (551 - 689 kPa) during a cold start and may exceed 100 psi (689 kPa) in some conditions. The oil pressure gauge needle may also move quickly back and forth (flutter) in some conditions.



Engine coolant temperature gauge - measures engine coolant temperature 100-260°F (38-127°C).

Note: It is normal for the engine temperature needle to NOT point at 12 o'clock for stabilized driving.

