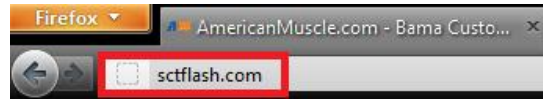


INSTALL AND SETUP:

1. Please go to sctflash.com



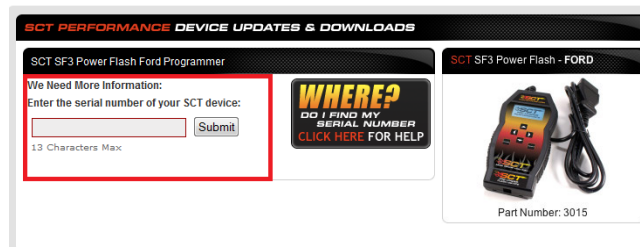
2. Click on "Tech Support" tab




3. Click on the picture of the tuner you have (middle of page)



4. Enter Serial Number for tuner



5. Download “Livelink” (last program on list) by clicking the “DOWNLOAD NOW” Picture



SCT SF3 Power Flash Ford Programmer NEW! Live Link Data Logging Software

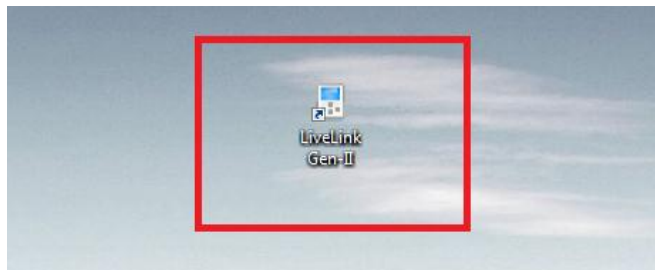
Version: 1.0.0.0 Release Date: 01-05-2011

Description: SCT's Live Link Datalogging Software is used to view / data log / record & playback your vehicles PCM data on a laptop computer.

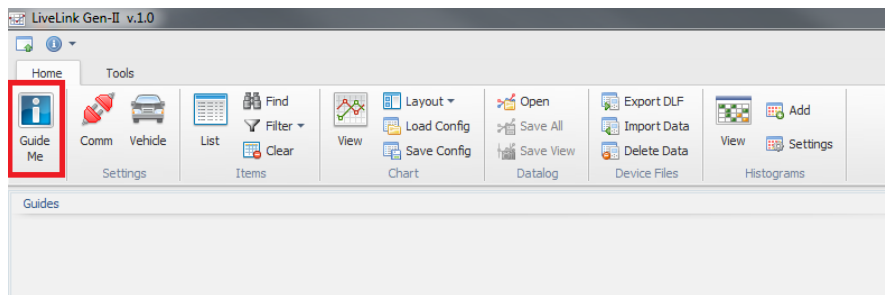
Notes: Changes to this version include:

- Higher resolution & data acquisition rate on all protocols
- Enhanced use interface including step-by-step guides
- Flexible UI using docked panels and multiple layouts
- Enhanced PIDs and EPIDs list selection
- TCM processor Support in selected Ford vehicles
- Histogram charts
- Configurable histogram map files
- Improved display precision & resolution

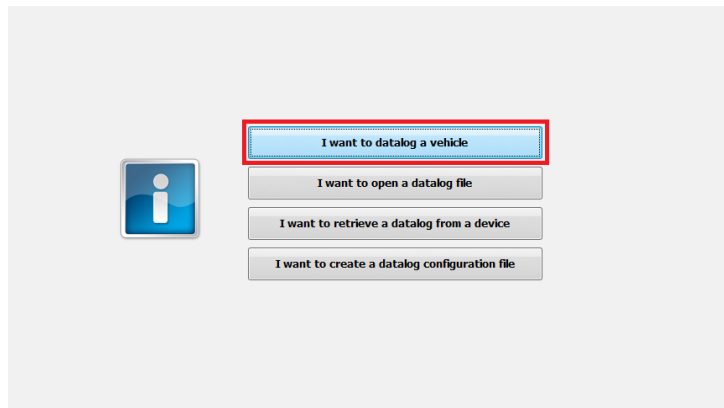
6. Open the “LiveLink” program



7. Click “Guide Me” in top left of screen



8. Click “I Want to Datalog Vehicle”



9. Select the following PID's to datalog

ENVIRONMENT

→ ECT degF

FUEL

→ Measured AFR Bank 1
→ Measured AFR Bank 2
→ Labmse bank 1
→ Labmse bank 2
→ Long term fuel trim bank 1
→ Long term fuel trim bank 2
→ Short term fuel trim bank 1
→ Short term fuel trim bank 2

MAF

→ MAF Frequency

MISCELLANEOUS

→ RPM
→ Load
→ Vehicle Speed

SPARK

→ Spark
→ Knock Sensor

THROTTLE

→ throttle position absolute

10. Click the green button in the top left of the screen to begin log.

DRIVING INSTRUCTION:

1. Start vehicle and allow to idle for 2-3 minutes
2. Drive vehicle normally for about 5 minutes
3. Do 2-3 WOT pulls (at your own discretion)
4. Click RED square button at top left to stop datalog.
5. Save datalog to computer and forward back to [BAMA PERFORMANCE](#)