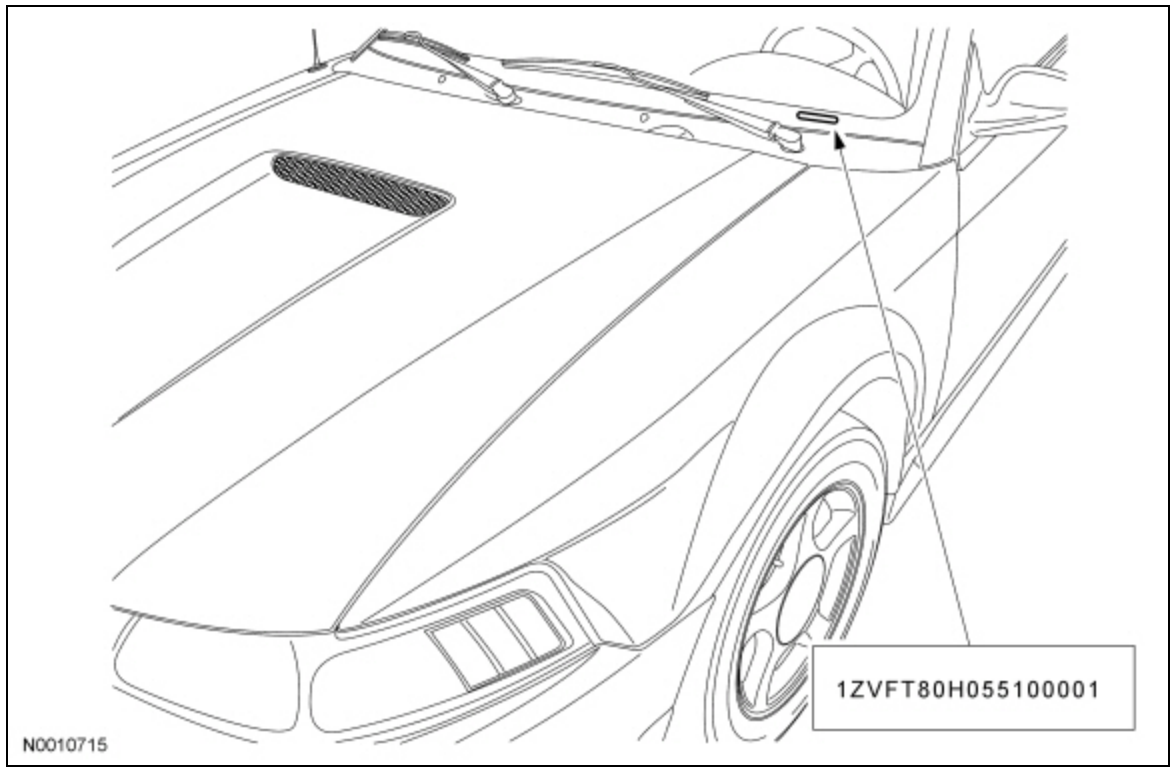
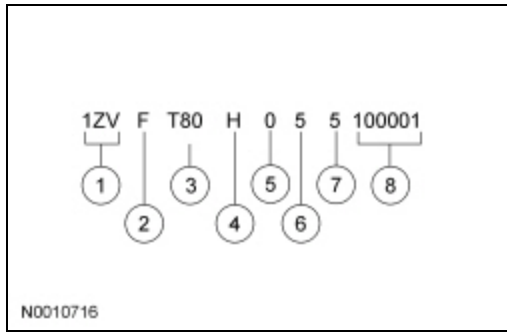


### Identification Codes

#### Vehicle Identification Number (VIN) Locator



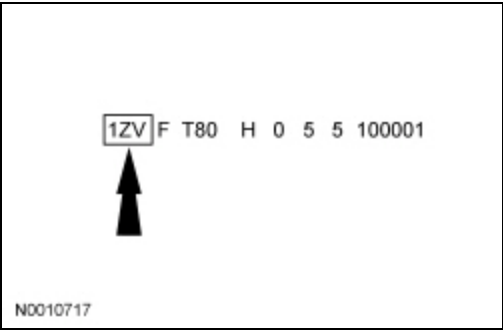
The vehicle identification number (VIN) is a 17-digit alphanumeric code. The VIN is stamped on a metal tab riveted to the instrument panel, top upper left of the dash. The VIN number is also found on the vehicle certification (VC) label.



Item	Description
1	World manufacturer identifier (WMI)
2	Restraint type code
3	Line, series, body type (passenger car)
4	Engine code
5	Computer generated VIN check digit
6	Model year code
7	Assembly plant code
8	Production sequence number

**Vehicle Identification Number**

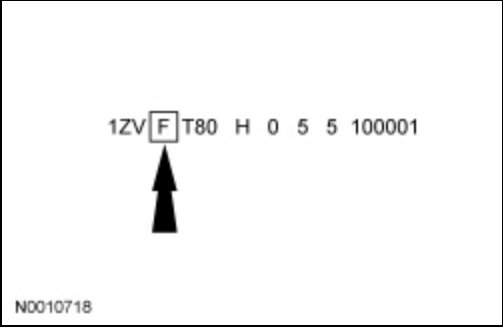
**World Manufacturer Identifier (WMI)**



The first 3 vehicle identification number (VIN) positions are the world manufacturer identifier (WMI).

- 1ZV — Ford, USA, passenger car

**Restraint Type Code**



The 4th VIN position is the vehicle restraint system type code.

- F — Active safety belts, all positions — driver and front passenger air bags
- H — Active safety belts, all positions — driver and front passenger air bags with side impact air bags

### Line, Series and Body Type Code

1ZV F T80 H 0 5 5 100001



N0010719

Positions 5 through 7 indicate vehicle line, series and body type.

- T80 — 2-door coupe, base
- T82 — 2-door coupe, GT
- T84 — 2-door convertible, base
- T85 — 2-door convertible, GT

### Engine Code

1ZV F T80 H 0 5 5 100001



N0010720

The 8th VIN position is the engine displacement and number of cylinders code.

- H — 4.6L, OHC, EFI, 8 cylinder
- N — 4.0L, SOHC, EFI, 6 cylinder

### Computer Generated Check Digit

1ZV F T80 H 0 5 5 100001



N0010721

The 9th VIN position is a government assigned, computer-generated check digit code (0-9).

### Model Year Code

1ZV F T80 H 0 5 5 100001



N0010722

The 10th VIN position is the model year code.

- 5 — 2005

### Assembly Plant Code

1ZV F T80 H 0 5 5 100001

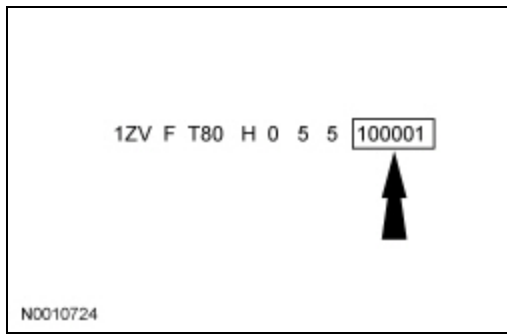


N0010723

The 11th VIN position is the assembly plant code.

- 5 — AAI — Flatrock, Michigan (USA)

### Production Sequence Number

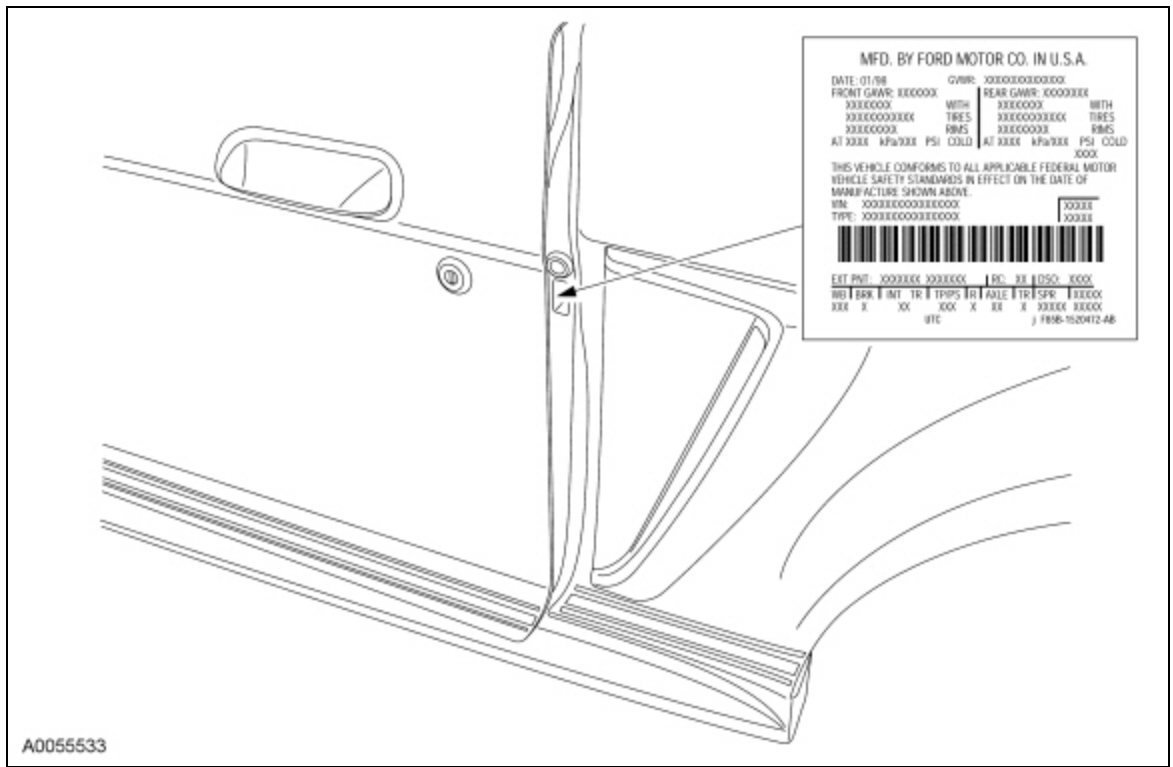


The last 6 VIN positions are the production sequence number. This number is also used as the vehicle serial and warranty number.

- 100001-599999

**Vehicle Certification (VC) Label**

**Vehicle Certification (VC) Label Locator**



The upper portion of the vehicle certification (VC) label contains the manufacturer name, the month and year of manufacture, the certification statement and the VIN. It also includes gross vehicle weight ratings (GVWR). The VC label is located on the LH door jamb.

MFD. BY FORD MOTOR CO. IN U.S.

DATE: XXXXX GVWR: XXXXXXXXXXXXXXXX  
 FRONT GAWR: XXXXXXX XXXXXXX  
 REAR GAWR: XXXXXXX XXXXXXX

THIS VEHICLE CONFORMS TO ALL APPLICABLE FEDERAL  
 VEHICLE SAFETY, BUMPER, AND THEFT PREVENTION  
 IN EFFECT ON THE DATE OF MANUFACTURE SHOWN

VIN: XXXXXXXXXXXXXXXXXXXX  
 TYPE: XXXXXXXXXXXXXXXXXXXX



A0009015

Item	Description
1	Exterior paint color code
2	Region code
3	Special order code DSO — domestic special order FSO — foreign special order PTO — paint, tire option special order
4	Brake type code
5	Interior trim code
6	Tape/paint stripe code
7	Radio type code
8	Axle ratio code
9	Transmission code
10	Spring code
11	Powertrain calibration code

Vehicle Certification (VC) Label Reference

**Paint Codes**

MFD. BY FORD MOTOR CO. IN U.S.A.

DATE: XXXXX GVWR: XXXXXXXXXXXXXXXX  
FRONT GAWR: XXXXXX XXXXXXX  
REAR GAWR: XXXXXX XXXXXXX

THIS VEHICLE CONFORMS TO ALL APPLICABLE FEDERAL MOTOR VEHICLE SAFETY, BUMPER, AND THEFT PREVENTION STANDARDS IN EFFECT ON THE DATE OF MANUFACTURE SHOWN ABOVE.

VIN: XXXXXXXXXXXXXXXX  
TYPE: XXXXXXXXXXXXXXXX



XXXXX  
XXXXX

EXT PNT:	XXXXXXXX	XXXXXXXX	RC:	XX	DSC:	XXXX		
BRK	INT	TR	TP/PS	R	AXLE	TR	SPR	XXXX
X	XX		XXX	X	XX	X	XXXX	XXXXX

UPC 1 F85B-1520472-AB

A0009016

The 1st set of paint code letters/numbers listed indicate the vehicle primary body color. The 2nd set of paint code letters/numbers listed (if applicable) indicate a 2-tone or accent body color. All colors are base coat/clear coat.

- D3 — Colorado Red
- D6 — Screamin Yellow
- G2 — Redfire
- HP — High Performance White
- P1 — Lime Gold
- P3 — Windveil Blue
- SN — Sonic Blue
- TK — Mineral Gray
- TL — Satin Silver
- UA — Ebony

**Brake Codes**

MFD. BY FORD MOTOR CO. IN U.S.A.

DATE: XXXXX                      GWR: XXXXXXXXXXXXXXX

FRONT GAWR: XXXXXX XXXXXX

REAR GAWR: XXXXXX XXXXXX

THIS VEHICLE CONFORMS TO ALL APPLICABLE FEDERAL MOTOR  
VEHICLE SAFETY, BUMPER, AND THEFT PREVENTION STANDARDS  
IN EFFECT ON THE DATE OF MANUFACTURE SHOWN ABOVE.

VIN: XXXXXXXXXXXXXXX

TYPE: XXXXXXXXXXXXXXX

XXXXX  
XXXXX



EXT PNT: XXXXXX XXXXXX    RC: XX    DSO: XXXX

BRK	INT	TR	TP/PS	R	AXLE	TR	SPR	XXXXX
-----	-----	----	-------	---	------	----	-----	-------

X	XX	XXX	X	XX	X	XXXX	XXXXX
---	----	-----	---	----	---	------	-------

UPC    ¶ F85B-1520472-AB



A0009017

The brake type codes are:

- 2 — 4-wheel disc with anti-lock brake system (ABS)
- 3 — Traction control
- 5 — 4-wheel disc with anti-lock brake system (ABS) and traction control
- Blank — Standard (non-ABS) brake system

### Interior Trim Codes



MFD. BY FORD MOTOR CO. IN U.S.A.

DATE: XXXXX GVMR: XXXXXXXXXXXXXXXX  
FRONT GAWR: XXXXXX XXXXXXX  
REAR GAWR: XXXXXXX XXXXXXX

THIS VEHICLE CONFORMS TO ALL APPLICABLE FEDERAL MOTOR  
VEHICLE SAFETY, BUMPER, AND THEFT PREVENTION STANDARDS  
IN EFFECT ON THE DATE OF MANUFACTURE SHOWN ABOVE.

VIN: XXXXXXXXXXXXXXXX  
TYPE: XXXXXXXXXXXXXXXX

XXXXX  
XXXXX



EXT PNT: XXXXXXX XXXXXXX | RC: XX | DSO: XXXX

BRK | INT TR | TP/PS | R | AXLE | TR | SPR | XXXXX

X | XX | XXX X XX X XXX XXXX

UPC V F85B-1520472-AB



A0009018

The interior trim codes are listed below. The 1st character is for the interior fabric. The 2nd character is for the interior color.

- 5 — Cloth seats with logo — GT
- J — Verona leather seats — base
- K — Nudo/Aberdeen leather seats — GT/base
- P — Cloth seats — base

The interior trim colors are:

- 2 — Medium Dove
- H — Camel
- R — Midnight Black/Crimson Red
- W — Charcoal Black

**Tape/Paint Stripe Codes**

MFD. BY FORD MOTOR CO. IN U.S.A.

DATE: XXXXX GWR: XXXXXXXXXXXXXXXX  
FRONT GAWR: XXXXXXX XXXXXXX  
REAR GAWR: XXXXXXX XXXXXXX

THIS VEHICLE CONFORMS TO ALL APPLICABLE FEDERAL MOTOR  
VEHICLE SAFETY, BUMPER, AND THEFT PREVENTION STANDARDS  
IN EFFECT ON THE DATE OF MANUFACTURE SHOWN ABOVE.

VIN: XXXXXXXXXXXXXXXX  
TYPE: XXXXXXXXXXXXXXXX

XXXXX  
XXXXX



EXT PNT: XXXXXXX XXXXXXX | RC: XX | DSO: XXXX

BRK	INT TR	TP/PS	R	AXLE	TR	SPR	XXXXX
X	XX	XXX	X	XX	X	XXXX	XXXXX

UPC T F85B-1520472-AB



A0009019

- 1 — Black (body side accent stripe)
- 2 — White (body side accent stripe)
- 3 — Light Pearl Gold (body side accent stripe)

### Radio Codes

MFD. BY FORD MOTOR CO. IN U.S.A.

DATE: XXXXX GAWR: XXXXXXXXXXXXXXXX  
FRONT GAWR: XXXXXXX XXXXXXX  
REAR GAWR: XXXXXXX XXXXXXX

THIS VEHICLE CONFORMS TO ALL APPLICABLE FEDERAL MOTOR  
VEHICLE SAFETY, BUMPER, AND THEFT PREVENTION STANDARDS  
IN EFFECT ON THE DATE OF MANUFACTURE SHOWN ABOVE.

VIN: XXXXXXXXXXXXXXXX  
TYPE: XXXXXXXXXXXXXXXX

XXXXX  
XXXXX



EXT PNT: XXXXXXX XXXXXXX | RC: XX | DSO: XXXX

BRK	INT	TR	TP/PS	R	AXLE	TR	SPR	XXXXX
X	XX		XXX	X	XX	X	XXX	XXXXX



UPC 7 858-152042-AB

A0009020

The radio type codes are:

- 5 — Premium electronic AM/FM stereo with compact disc (CD) player and clock
- 9 — CDX6+, AM/FM stereo with 6-disc compact disc (CD) changer and MP3

**Axle Ratio Codes**

MFD. BY FORD MOTOR CO. IN U.S.A.

DATE: XXXXX GVMR: XXXXXXXXXXXXXXXX  
FRONT GAWR: XXXXXXX XXXXXXX  
REAR GAWR: XXXXXXX XXXXXXX

THIS VEHICLE CONFORMS TO ALL APPLICABLE FEDERAL MOTOR  
VEHICLE SAFETY, BUMPER, AND THEFT PREVENTION STANDARDS  
IN EFFECT ON THE DATE OF MANUFACTURE SHOWN ABOVE.

VIN: XXXXXXXXXXXXXXXX  
TYPE: XXXXXXXXXXXXXXXX

XXXXX  
XXXXX



EXT PNT: XXXXXXX XXXXXXX | RC: XX | DSO: XXXX

BRK	INT	TR	TP/PS	R	AXLE	TR	SPR	XXXX
X	XX		XXX	X	XX	X	XXX	XXXX

IPC F85B-1520472-AB



A0009021

The axle ratios are:

- BG — 3.31 — non-limited slip, base vehicle with manual or automatic transmission
- CD — 3.55 — limited slip, GT with manual transmission
- CG — 3.31 — limited slip, GT with automatic transmission

### Transmission Codes

MFD. BY FORD MOTOR CO. IN U.S.A.

DATE: XXXXX GVMR: XXXXXXXXXXXXXXXX  
FRONT GAWR: XXXXXXX XXXXXXX  
REAR GAWR: XXXXXXX XXXXXXX

THIS VEHICLE CONFORMS TO ALL APPLICABLE FEDERAL MOTOR  
VEHICLE SAFETY, BUMPER, AND THEFT PREVENTION STANDARDS  
IN EFFECT ON THE DATE OF MANUFACTURE SHOWN ABOVE.

VIN: XXXXXXXXXXXXXXXX  
TYPE: XXXXXXXXXXXXXXXX

XXXXX  
XXXXX



EXT PNT: XXXXXXX XXXXXXX | RC: XX | DSD: XXXX  
BRK | INT TR | TP/PS | R | AXLE | TR | SPR | XXXXX  
X XX XXX X XX X XXX XXXX  
UPC | F85B-1520472-AB



A0009022

The transmission codes are:

- F — 5-speed manual (T5OD/TR3150) — Base
- K — 5-speed manual (TR3650) — GT
- L — 5-speed automatic (5R552) — Base/GT

**Spring Codes**

MFD. BY FORD MOTOR CO. IN U.S.A.

DATE: XXXXX                      GWR: XXXXXXXXXXXXXXXX  
FRONT GAWR: XXXXXXX XXXXXXX  
REAR GAWR: XXXXXXX XXXXXXX

THIS VEHICLE CONFORMS TO ALL APPLICABLE FEDERAL MOTOR  
VEHICLE SAFETY, BUMPER, AND THEFT PREVENTION STANDARDS  
IN EFFECT ON THE DATE OF MANUFACTURE SHOWN ABOVE.

VIN: XXXXXXXXXXXXXXXXXXXX  
TYPE: XXXXXXXXXXXXXXXXXXXX

XXXXX  
XXXXX



EXT PNT: XXXXXXX XXXXXXX | RC: XX | DSO: XXXX

BRK	INT TR	TP/PS	R	AXLE	TR	SPR	XXXXX
X	XX	XXX	X	XX	X	XXXX	XXXXX

LPC    V    SB-1520472-AB



A0009023

The spring code portion of the vehicle certification (VC) label identifies both the front and rear springs. The 1st letter/number indicates the front spring code. The 2nd letter/number indicates the rear spring code.

- Front springs — base part number — 5310 (RH/LH)
- Rear springs — base part number — 5560 (RH/LH)

**Powertrain Calibration Information**

MFD. BY FORD MOTOR CO. IN U.S.A.

DATE: XXXXX GVWR: XXXXXXXXXXXXXXXX  
FRONT GAWR: XXXXXXX XXXXXXX  
REAR GAWR: XXXXXXX XXXXXXX

THIS VEHICLE CONFORMS TO ALL APPLICABLE FEDERAL MOTOR VEHICLE SAFETY, BUMPER, AND THEFT PREVENTION STANDARDS IN EFFECT ON THE DATE OF MANUFACTURE SHOWN ABOVE.

VIN: XXXXXXXXXXXXXXXX  
TYPE: XXXXXXXXXXXXXXXX

XXXXX  
XXXXX



EXT PNT: XXXXXXX XXXXXXX | RC: XX | DSO: XXXX

BRK	INT TR	TP/PS	R	AXLE	TR	SPR	XXXXX
X	XX	XXX	X	XX	X	XXXX	XXXXX

UPC T F85B-152 72-AB

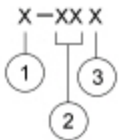


A0009024

**NOTE:** Powertrain calibration information is limited to a maximum of 5 characters per line on the Vehicle Certification Label. Because of this, calibration identification consisting of more than 5 characters will wrap to the second line on the VC label.

Powertrain calibration information is printed in the lower right corner of the Vehicle Certification Label. Only the base calibration information is printed. Revision levels will not appear, however, this information can be found in the On Line Automotive Service Information System (OASIS). For the current model year, Ford Motor Company is using 3 different protocols which describe powertrain base calibration. These protocols are designed to provide worldwide standardization for vehicle calibration. If the electronic calibration strategy has been used since 1998 and carried into the current model year, protocol 1 will be used. Refer to Protocol 1 below. If the electronic calibration strategy has been used since 1999 and is carried into the current model year, protocol 2 will be used. Refer to Protocol 2 below. For new electronic calibration strategies introduced since the 2000 model year, use protocol 3. Refer to Protocol 3 below.

### Protocol 1

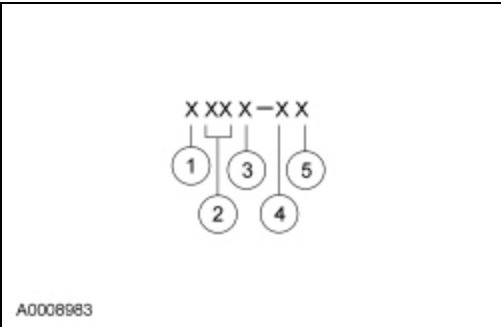


A0008882

Item	Description
1	Model year (model year in which calibration strategy was first introduced)

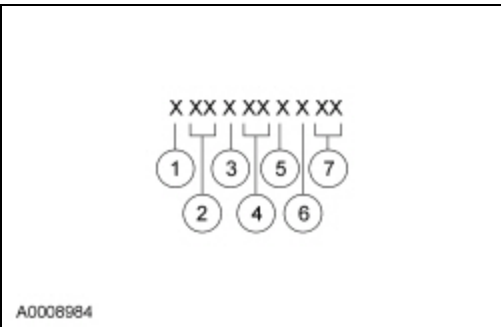
2	Item	Engine code	Description
3		Engine revision level	

**Protocol 2**



Item	Description
1	Model year (model year in which calibration strategy was first introduced)
2	Engine code
3	Transmission code
4	Emission standard (designates the specific country emission standard)
5	Design level (design level assigned to the engine)

**Protocol 3**



Item	Description
1	Model year (model year in which calibration strategy was first introduced)



Item	Description
2	Vehicle code
3	Transmission code
4	Unique calibration (designates different hardware to similar vehicles). Example: tires, drive ratios, etc.
5	Fleet code (describes fleet to which the vehicle belongs). Example: 6 - evaporative emissions
6	Certification region (lead region where multiple regions are included in one calibration). Example: A - U.S. federal
7	Revision level (will advance as revisions occur). Not printed on label

**Protocol 3**

The following offers a more detailed explanation of the coding strategy used for Protocol 3.

**Model Year**

- Y — 2000
- 1 — 2001
- 2 — 2002
- 3 — 2003
- 4 — 2004
- 5 — 2005

**Vehicle Line**

- ZF — Mustang

**Transmission**

- 1 — Automatic transmission
- 2 — Manual transmission

**Unique Calibration**

The Emissions/CAFE/CO2 Compliance Department is responsible for assigning these calibration numbers. Unique calibration identifications are assigned to cover similar vehicles to differentiate tires, drive configurations, final drive ratios and other calibration-significant factors.

These 2 characters are chosen by the analyst to provide easily identifiable information unique to each calibration. For example, using the number 2 to denote a 2-valve engine versus using the number 4 to denote a 4-valve engine.

**Fleet Code**

- 1 — HDGE/Dyno
- 2 — Fast AMA, U.S.
- 3 — ADP, U.S.
- 4 — Not assigned
- 5 — Not assigned
- 6 — Evaporative emissions
- 7 — MACAA

- 8 — On-board diagnostics (OBD)
- 9 — Not assigned

### **Certification Region**

- 5 — U.S. 50 states
- A — U.S. federal, including altitude, may include Canada and/or Mexico
- B — U.S. California standard, includes U.S. green states
- C — Canada
- D — China
- E — European Community (Austria, Belgium, Denmark, Finland, France, Germany, Greece, Ireland, Italy, Luxembourg, Netherlands, Portugal, Spain, Sweden and United Kingdom)
- F — Extended European Community (E plus Croatia, Czech Republic, Estonia, Hungary, Norway, Poland, Romania, Russian Federation, Slovakia, Slovenia, Switzerland and Yugoslavia)
- G — Gulf Cooperative Council (Bahrain, Kuwait, Oman, Qatar, Saudi Arabia and UAE)
- H — Hong Kong
- J — Japan
- K — Korea
- L — Malaysia
- M — Mexico
- N — New Zealand
- P — Australia
- Q — South America (Brazil)
- S — Singapore
- T — Taiwan
- U — South America (unleaded fuel regions)
- V — Vietnam
- X — Rest of world (ROW)
- Y — Military
- Z — Israel

### **Revision Level (not printed on label)**

- 91-99 — Hardware certification levels
- 01-04 — Preliminary levels
- 00 — Job 1 production (initial certification)
- 05-09 — Pre-job 1 revisions to calibrations
- 10-89 — Post-job 1 revisions to calibrations
- 0B — Durability test level
- BD — On-board diagnostics (OBD) intermediate level (pre-05)

