

2011 MUSTANG



Courtesy of Ford Motor Company

Specifications

fordvehicles.com



Drive one.

STANDARD FEATURES

Mechanical

4-wheel disc Anti-Lock Brake System (ABS)
All-speed traction control
Coil spring 3-link solid-axle rear suspension
Coil-over strut front suspension
Electronic power-assisted steering

Seating

4-way manually height-adjustable driver's seat
2-way manual front-passenger seat
50/50 split-fold rear seat (coupe only)

Interior

4-gauge instrument cluster with chrome accents
Air conditioning
Premium AM/FM stereo/single-CD audio system
Auxiliary audio input jack
Carpeted front floor mats in Charcoal Black
Cruise control
Cupholders (2)
Full center floor console with armrest and locking storage
Ice Blue™ Lighting
Interior trunk release
Message center
Power door locks
Power windows with one-touch-up/-down feature
Tilt steering column

Exterior

Black rocker moldings
Complex-reflector halogen headlamps
Easy Fuel® capless fuel filler
Rear-window defroster
Sequential light-emitting diode (LED) taillamps
Variable-interval windshield wipers

Safety & Security

Personal Safety System™ with dual-stage front airbags
AdvanceTrac® electronic stability control
Belt-Minder® front safety belt reminder
Front-seat side airbags
Illuminated Entry System
LATCH – Lower anchors and tether anchors for child-safety seats
MyKey® owner controls feature
Remote Keyless Entry System with integrated keyhead transmitter remotes (2)
Safety belt restraint system – Manual 3-point shoulder and lap safety belt system for all seating positions
SecuriLock® Passive Anti-Theft System
Side-intrusion door beams
SOS Post-Crash Alert System™
Tire Pressure Monitoring System (excludes spare)

2011 EPA-Estimated Fuel Economy

3.7L Ti-VCT V6 engine

Manual transmission	19 mpg city/29 hwy
Automatic transmission	19 mpg city/31 hwy

5.0L Ti-VCT V8 engine

Manual transmission	17 mpg city/26 hwy
Automatic transmission	18 mpg city/25 hwy

5.4L DOHC V8 engine

Manual transmission	15 mpg city/23 hwy
---------------------	--------------------

Dimensions & Capacities

Exterior	Coupe/Convertible
Wheelbase	107.1"
Length	188.1"
Height	55.8"
Width – Excluding mirrors	73.9"
Width – Including mirrors	80.1"

Interior – Front	
Head room	38.5"/38.8"
Shoulder room	55.3"
Hip room	53.4"
Leg room	42.4"

Interior – Rear	Coupe/Convertible
Head room	34.7"/36.5"
Shoulder room	51.6"/45.0"
Hip room	46.8"/45.2"
Leg room	29.8"

Capacities

Passenger volume (cu. ft.)	83.3/81.0
Luggage capacity (cu. ft.)	13.4/9.6
Total interior volume (cu. ft.)	96.7/90.6
Fuel capacity (gal.)	16.0

New Vehicle Limited Warranty. We want your Ford Mustang ownership experience to be the best it can be. So under this warranty, your new vehicle comes with 3-year/36,000-mile bumper-to-bumper coverage, 5-year/60,000-mile Powertrain Warranty coverage, 5-year/50,000-mile safety restraint coverage, and 5-year/unlimited-mile corrosion (perforation) coverage – all with no deductible. Please ask your Ford Dealer for a copy of this limited warranty.

Roadside Assistance. Covers your vehicle for 5 years or 60,000 miles, so you have the security of knowing that help may be only a phone call away should you run out of fuel, lock yourself out of the vehicle or need towing. Your Ford Dealer can provide complete details on all of these advantages.

Ford Credit. Get the ride you want. Whether you plan to lease or finance, you'll find the choices that are right for you at Ford Credit. Ask your Ford Dealer for details or check us out at fordcredit.com.

Ford Extended Service Plan. For a purchase or lease, the Ford Extended Service Plan (ESP) gives you "Peace-of-Mind" protection designed to cover key vehicle components and protect you from the cost of unexpected repairs. Ask your dealer for a Ford ESP, the only service contract backed exclusively by Ford and honored at all Ford Lincoln Mercury dealerships.

Insurance Services. Get Ford Motor Company quality in your auto insurance. Our program offers industry-leading benefits and competitive rates. Call 1-877-367-3847, or visit us at fordvip.com for a no-obligation quote. Insurance offered by American Road Services Company (in CA, American Road Insurance Agency), a licensed agency and subsidiary of Ford Motor Company.

Comparisons based on 2010 competitive models (class is V6 and V8 Sports Cars), publicly available information and Ford certification data at release of this PDF. Some features discussed may be optional. Vehicles shown may contain optional equipment. Features shown may be offered only in combination with other options or subject to additional ordering requirements or limitations. Dimensions shown may vary due to optional features and/or production variability. Following release of this PDF, certain changes in standard equipment, options and the like, or product delays may have occurred which would not be included in these pages. Your Ford Dealer is the best source for up-to-date information. Ford Division reserves the right to change product specifications at any time without incurring obligations.

Shelby and GT500 are registered trademarks of Carroll Hall Shelby Trust.

Brembo is a trademark of Brembo S.p.A.

Goodyear is a registered trademark of The Goodyear Tire & Rubber Company.

Alcantara is a registered trademark of Alcantara S.p.A., Italy.

HD Radio is a proprietary trademark of iBiquity Digital Corp.

Microsoft is a registered trademark of Microsoft Corporation.

The Bluetooth word mark is a trademark of the Bluetooth SIG, Inc.

Subscriptions governed by SIRIUS Terms and Conditions available at sirius.com. Service available in the 48 contiguous United States and D.C. SIRIUS, XM and all related marks and logos are trademarks of SIRIUS XM Radio Inc. and its subsidiaries.

¹Always wear your safety belt and secure children in the rear seat. ²Coupe only. 30 mpg hwy for convertible.



V6

Rapid Spec 100A

Includes all standard features, plus:

Mechanical

3.7L Ti-VCT V6 engine with 305 hp @ 6,500 rpm and 280 lb.-ft. of torque @ 4,250 rpm

6-speed manual transmission

2.73:1 gear ratio with limited-slip differential

17-in. painted-aluminum wheels

Front and rear stabilizer bars

Tire mobility kit

Exterior

Black power sideview mirrors with integrated blind spot mirrors

Stainless steel dual exhaust tips

Vinyl top (convertible only)



V6 PREMIUM

Rapid Spec 200A

Includes select V6 features, plus:

Mechanical

17-in. machined-aluminum wheels with painted pockets

Seating

6-way power driver's seat with power lumbar

Leather-trimmed seats

Interior

6-gauge cluster with MyColor® illumination

Ambient lighting

Bright-aluminum instrument panel, pedal covers, door-sill scuff plates and shift knob

Bright-chrome door speaker surrounds

Ford SYNC® voice-activated, in-vehicle communications and entertainment system

Leather-wrapped steering wheel with aluminum spokes

Shaker™ 500 Audio System with AM/FM stereo/single-CD player with MP3 capability, 8 speakers and 500 watts

SIRIUS Satellite Radio with 6-month introductory subscription

Vinyl door-trim panel inserts



GT

Rapid Spec 300A

Includes all standard features, plus:

Mechanical

5.0L Ti-VCT V8 engine with 412 hp @ 6,500 rpm¹ and 390 lb.-ft. of torque @ 4,250 rpm¹

6-speed manual transmission

3.31:1 gear ratio with limited-slip differential

18-in. wide-spoke painted-aluminum wheels

Compact spare tire

Exterior

Automatic headlamps

Body-color power sideview mirrors with integrated blind spot mirrors

Dark-chrome Pony badge located in grille

Dual bright rolled exhaust tips

Fog lamps

Rear spoiler



GT PREMIUM

Rapid Spec 400A

Includes select GT features, plus:

Seating

6-way power driver's seat with power lumbar

Leather-trimmed seats

Interior

6-gauge cluster with MyColor illumination

Ambient lighting

Bright-aluminum instrument panel, pedal covers, door-sill scuff plates and shift knob

Bright-chrome door speaker surrounds

Leather-wrapped steering wheel with aluminum spokes

Shaker 500 Audio System with AM/FM stereo/single-CD player with MP3 capability, 8 speakers and 500 watts

SIRIUS Satellite Radio with 6-month introductory subscription

SYNC

Vinyl door-trim panel inserts

Exterior

Cloth top on convertible

Soft boot for convertible top



SHELBY GT500™

Rapid Spec 820A

Includes select GT Premium features, plus:

Mechanical

5.4L DOHC V8 engine with 550 hp @ 6,000 rpm and 510 lb.-ft. of torque @ 4,500 rpm

6-speed manual transmission

9.0 psi boost

3.55:1 gear ratio with limited-slip differential

19-in. x 9.5-in. premium painted-aluminum wheels

Forged-steel crankshaft and connecting rods

Brembo™ 14-in. vented front rotors with 4-piston calipers

11.8-in. vented rear rotors with 2-piston calipers

SVT-tuned suspension with unique shocks and springs

Tuned stainless steel H-pipe exhaust

Seating

Leather-trimmed sport bucket seats with racing stripes and Alcantara® trim

Interior

Leather-wrapped steering wheel with Alcantara trim

Message center with compass

Exterior

GT500® badging

GT500 side rocker stripes

HID headlamps with autolamp

Le Mans racing stripes

Power dome hood with heat extractor

Unique rear spoiler

¹Figures achieved using premium unleaded fuel.

V6



17-in. Painted-Aluminum Wheels
Standard



19-in. Painted Machined-Aluminum Wheels
included with V6 Performance Package



V6/Charcoal Black Cloth



V6/Coupe/Black/Exterior Appearance Package

2011 **MUSTANG**

Specifications

fordvehicles.com



Drive one.

V6 OPTIONAL FEATURES

Available Rapid Spec

Rapid Spec 101A – **Exterior Appearance Package** includes lower bodyside tape stripes and rear spoiler

Available Options and Packages

3.31:1 gear ratio with limited-slip differential (coupe only)

6-speed automatic transmission

Security Package includes Active Anti-Theft System and wheel locks

V6 Performance Package includes GT Coupe suspension, 3.31 limited-slip differential, unique electronic stability control (ESC) tuning, strut-tower brace, 19-in. painted machined-aluminum wheels (coupe only) and P255/40R19 summer-only tires (late availability)

Exterior Colors	Interior Colors	Top Colors	Stripe Colors
Grabber Blue	●	▲	◇ ◆
Performance White	● ●	▲ ▲	◆
Kona Blue Metallic	● ●	▲ ▲	◇ ◆
Race Red	● ●	▲ ▲	◇ ◆
Red Candy Metallic Tinted Clearcoat ¹	● ●	▲ ▲	◇ ◆
Black	● ●	▲ ▲	◇ ◆
Sterling Gray Metallic	● ●	▲	◇ ◆
Ingot Silver Metallic	● ●	▲	◆

Interiors: ● Stone Cloth ● Charcoal Black Cloth **Convertible Tops:** ▲ Stone Vinyl ▲ Black Vinyl
Tape Stripes: ◇ White ◆ Satin Black

MUSTANG V6 BODY STYLES



Coupe

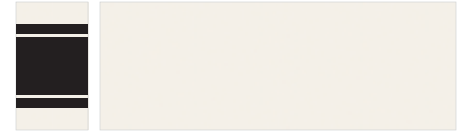


Convertible

EXTERIOR



Grabber Blue



Performance White



Kona Blue Metallic



Race Red



Red Candy Metallic Tinted Clearcoat



Black



Sterling Gray Metallic

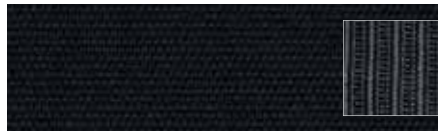


Ingot Silver Metallic

INTERIOR



Stone Cloth
Standard



Charcoal Black Cloth
Standard

Colors shown are representative only.
See your dealer for actual paint/trim options.

¹Additional charge.

V6 PREMIUM



17-in. Machined-Aluminum
Wheels with Painted Pockets
Standard



18-in. Sterling Gray Metallic Painted-
Aluminum Wheels included with
Mustang Club of America Edition



18-in. Polished-Aluminum Wheels
included with V6 Pony Package



19-in. Painted Machined-Aluminum
Wheels included with
V6 Performance Package



V6 Premium/Saddle Leather



V6 Premium/Coupe/Ingot Silver Metallic/V6 Pony Package

2011 **MUSTANG**

Specifications

fordvehicles.com



Drive one.

V6 PREMIUM OPTIONAL FEATURES

Available Rapid Spec

Rapid Spec 201A – **Exterior Appearance Package** includes lower bodyside tape stripes and rear spoiler

Rapid Spec 202A – **V6 Pony Package** includes 18-in. polished-aluminum wheels, satin-chrome grille, body-color sideview mirrors, fog lamps, automatic headlamps, floor mats with embroidered Pony logo, lower bodyside tape stripe, and rear spoiler

Rapid Spec 203A – **Mustang Club of America Edition** includes painted dark stainless billet-style grille, lower fascia-mounted fog lamps, unique bodyside satin-black tape stripe, decklid tape appliqué, 18-in. Sterling Gray Metallic painted-aluminum wheels with P235/50R18 W-rated tires, premium carpeted floor mats, automatic headlamps, and rear spoiler

Available Options and Packages

3.31:1 gear ratio with limited-slip differential (coupe only)

6-speed automatic transmission

Comfort Package includes 6-way power front-passenger seat, and heated front seats

Electronics Package includes dual-zone electronic automatic temperature control, HD Radio™ and hard drive-based, voice-activated Navigation System, featuring about 10 gigabytes of digital storage for pictures and music; includes AM/FM stereo/single-CD/DVD, and MP3 capability

Glass roof (coupe only; not available with Stone interior)

HID headlamps (requires Security Package; not available with Rapid Spec 200A or 201A)

Rear view camera (not available with Rapid Spec 200A)

Security Package includes Active Anti-Theft System and wheel locks

Soft boot for convertible top

Tape stripe delete (not available with Rapid Spec 200A)

V6 Performance Package includes GT Coupe suspension, 3.31 limited-slip differential (coupe manual only), unique electronic stability control (ESC) tuning, strut-tower brace, 19-in. painted machined-aluminum wheels and P255/40R19 summer-only tires (late availability)

Exterior Colors

Grabber Blue

Performance White

Kona Blue Metallic

Race Red

Red Candy Metallic Tinted Clearcoat¹

Black

Sterling Gray Metallic

Ingot Silver Metallic

Interior Colors

●

● ● ●

● ● ● ●

● ● ● ●

● ● ● ●

● ● ● ●

● ● ● ●

● ● ● ●

Top Colors

▲

▲ ▲

▲ ▲

▲ ▲

▲ ▲

▲ ▲

▲ ▲

▲

Stripe Colors

◇ ◆

◆ ◆

◇ ◆

◇ ◆

◇ ◆

◇ ◆

◇² ◆

Interiors: ● Stone Leather ● Charcoal Black Leather ● Saddle Leather
Convertible Tops: ▲ Stone Vinyl ▲ Black Vinyl **Tape Stripes:** ◇ White ◆ Satin Black

EXTERIOR



Grabber Blue



Performance White



Kona Blue Metallic



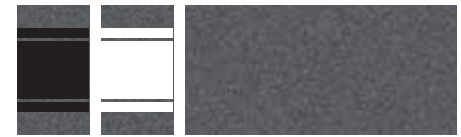
Race Red



Red Candy Metallic Tinted Clearcoat



Black



Sterling Gray Metallic



Ingot Silver Metallic

MUSTANG V6 PREMIUM BODY STYLES



Coupe



Glass Roof



Convertible

INTERIOR



Stone Leather Standard



Charcoal Black Leather Standard



Saddle Leather Standard

Colors shown are representative only. See your dealer for actual paint/trim options.

¹Additional charge. ²Saddle Leather only.

2011 MUSTANG

Specifications

fordvehicles.com



Drive one.

GT



18-in. Wide-Spoke Painted-Aluminum Wheels
Standard



19-in. Dark Stainless Painted-Aluminum Wheels
included with Brembo Brake Package



GT/Charcoal Black Cloth



GT/Coupe/Red Candy Metallic Tinted Clearcoat

2011 **MUSTANG**

Specifications

fordvehicles.com



Drive one.

GT OPTIONAL FEATURES

Available Options and Packages

3.55:1 gear ratio with limited-slip differential (manual transmission only)

3.73:1 gear ratio with limited-slip differential (manual transmission only)

6-speed automatic transmission with 3.15:1 gear ratio with limited-slip differential

Brembo™ Brake Package includes 14-in. Brembo vented front rotors with Brembo 4-piston calipers, 11.8-in. vented rear rotors with 2-piston calipers, unique electronic stability control (ESC) suspension tuning, and 19-in. dark stainless painted-aluminum wheels with P255/40R19 Z-rated summer-only performance tires (manual transmission only)

Security Package includes Active Anti-Theft System and wheel locks

Spoiler delete option

Exterior Colors

Exterior Colors	Interior Colors	Top Colors	Stripe Colors
Grabber Blue	●	▲	◇ ◆
Performance White	●	▲	◆
Kona Blue Metallic	●	▲	◇ ◆
Race Red	●	▲	◇ ◆
Red Candy Metallic Tinted Clearcoat ¹	●	▲	◇ ◆
Black	●	▲	◇ ◆
Sterling Gray Metallic	●	▲	◇ ◆
Ingot Silver Metallic	●	▲	◆

Interiors: ● Stone Cloth ● Charcoal Black Cloth

Tape Stripes: ◇ White ◆ Satin Black

Convertible Tops: ▲ Stone Vinyl ▲ Black Vinyl

MUSTANG GT BODY STYLES



Coupe



Convertible

EXTERIOR



Grabber Blue



Performance White



Kona Blue Metallic



Race Red



Red Candy Metallic Tinted Clearcoat



Black



Sterling Gray Metallic



Ingot Silver Metallic

INTERIOR



Stone Cloth
Standard



Charcoal Black Cloth
Standard

Colors shown are representative only. See your dealer for actual paint/trim options.
¹Additional charge.

2011 MUSTANG

Specifications

fordvehicles.com



Drive one.

GT PREMIUM

INTERIOR



Stone Leather
Standard



Charcoal Black Leather
Standard



Saddle Leather
Standard



Charcoal Black Leather with Carbon Insert
California Special Edition

Available Premier Trim With Color Accent Package



Brick Red Leather
with Cashmere-Colored Racing Stripe



Charcoal Black Leather
with Grabber Blue Racing Stripe



Charcoal Black Leather
with Cashmere-Colored Racing Stripe



GT Premium/Charcoal Black Leather/
Cashmere-Colored Racing Stripe/Premier Trim With Color Accent Package



GT Premium/Convertible/Grabber Blue/California Special Edition

MUSTANG GT PREMIUM BODY STYLES



Coupe



Glass Roof



Convertible

2011 **MUSTANG**

Specifications

fordvehicles.com



Drive one.

GT PREMIUM OPTIONAL FEATURES

Available Rapid Spec

Rapid Spec 401A – **Premier Trim With Color Accent Package** includes Charcoal Black interior environment with color-accented seats, unique door trim with bright Pony badge, aluminum shift knob and dark-aluminum instrument panel

Rapid Spec 402A – **California Special Edition** includes unique chrome billet-style grille with body-color surround, unique lower fascias with fog lamps, 19-in. argent painted machined-aluminum wheels with P245/45R19 tires, GT/CS side stripes, unique decklid badge with name in faux gas cap, unique instrument panel finish, carbon door-panel inserts, leather-trimmed seats with Carbon inserts, premium carpeted front floor mats with embroidered logo, rear lower fascia insert, pedestal rear spoiler, decklid tape appliqué, and side scoops

Available Options and Packages

18-in. polished-aluminum wheels

19-in. bright machined-aluminum wheels

19-in. premium painted Luster-Nickel aluminum wheels

3.55:1 gear ratio with limited-slip differential (manual transmission only)

3.73:1 gear ratio with limited-slip differential (manual transmission only)

6-speed automatic transmission with 3.15:1 gear ratio with limited-slip differential

Brembo™ Brake Package includes 14-in. Brembo vented front rotors with Brembo 4-piston calipers, 11.8-in. vented rear rotors with 2-piston calipers, unique electronic stability control (ESC) suspension tuning, and 19-in. dark stainless painted-aluminum wheels with P255/40R19 summer-only performance tires (manual only; not available with Rapid Spec 402A)

Comfort Package includes 6-way power front-passenger seat, and heated front seats

Electronics Package includes dual-zone electronic automatic temperature control, HD Radio™ and hard drive-based, voice-activated Navigation System, featuring about 10 gigabytes of digital storage for pictures and music; includes AM/FM stereo/single-CD/DVD, and MP3 capability

Glass roof (coupe only; not available with Stone interior)

HID headlamps (requires Security Package)

Rear view camera (not available with Rapid Spec 402A)

Security Package includes Active Anti-Theft System and wheel locks

Shaker™ 1000 Audio System with AM/FM stereo/single-CD player with MP3 capability, 10 speakers and 1000 watts (not available with Electronics Package)

Spoiler delete option

Exterior Colors

Grabber Blue

Performance White

Kona Blue Metallic

Race Red

Red Candy Metallic Tinted Clearcoat¹

Black

Sterling Gray Metallic

Ingot Silver Metallic

Interior Colors

●

● ● ●

● ● ●

● ● ●

● ● ●

● ● ●

● ● ●

● ● ●

● ● ●

Premier Trim Colors

■ ■ ■ ■

■ ■ ■ ■

■ ■ ■ ■

■ ■ ■ ■

■ ■ ■ ■

■ ■ ■ ■

■ ■ ■ ■

■ ■ ■ ■

■ ■ ■ ■

Top Colors

▲

▲

▲

▲

▲

▲

▲

▲

▲

Stripe Colors

◇ ◆

◇ ◆

◇ ◆

◇ ◆

◇ ◆

◇ ◆

◇ ◆

◇ ◆

◇ ◆

Interiors: ● Stone Leather ● Charcoal Black Leather ● Saddle Leather ■ Charcoal Black Leather with Carbon Insert ■ Brick Red Leather with Cashmere-Colored Stripe ■ Charcoal Black Leather with Grabber Blue Stripe ■ Charcoal Black Leather with Cashmere-Colored Stripe

Convertible Top: ▲ Black Cloth **Tape Stripes:** ◇ White ◆ Satin Black



18-in. Wide-Spoke Painted-Aluminum Wheels Standard



18-in. Polished-Aluminum Wheels Optional



19-in. Bright Machined-Aluminum Wheels Optional



19-in. Premium Painted Luster-Nickel Aluminum Wheels Optional



19-in. Argent Painted Machined-Aluminum Wheels included with California Special



19-in. Dark Stainless Painted-Aluminum Wheels included with Brembo Brake Package

EXTERIOR



Grabber Blue



Performance White



Kona Blue Metallic



Race Red



Red Candy Metallic Tinted Clearcoat



Black



Sterling Gray Metallic



Ingot Silver Metallic

Colors shown are representative only. See your dealer for actual paint/trim options.
¹Additional charge.

SHELBY GT500™

INTERIOR



Charcoal Black Leather with White Racing Stripes



Charcoal Black Leather with Silver Racing Stripes



Charcoal Black Leather with Grabber Blue Racing Stripes



Charcoal Black Leather with Red Racing Stripes



Charcoal Black Leather with Black Racing Stripes¹



Shelby GT500/Charcoal Black Leather/Silver Racing Stripes

SHELBY GT500 BODY STYLES



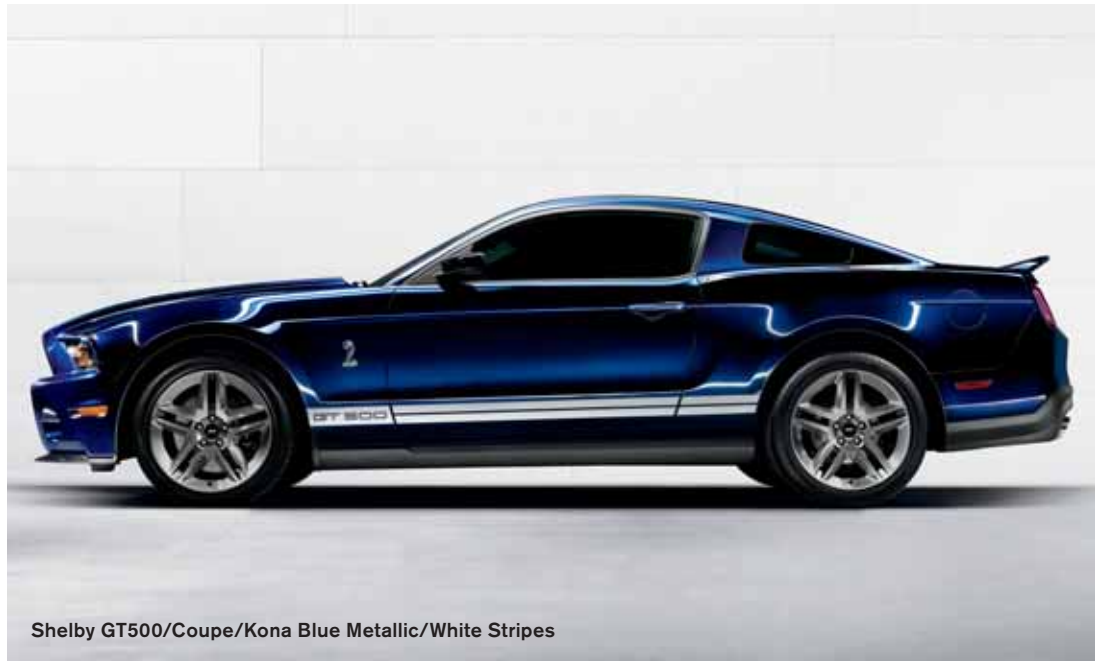
Coupe



Glass Roof



Convertible



Shelby GT500/Coupe/Kona Blue Metallic/White Stripes

¹Standard with tape stripe delete.

SHELBY GT500™ OPTIONAL FEATURES

Available Options and Packages

Electronics Package includes dual-zone electronic automatic temperature control, HD Radio™ and hard drive-based, voice-activated Navigation System, featuring about 10 gigabytes of digital storage for pictures and music; includes AM/FM stereo/single-CD/DVD, and MP3 capability

Glass roof (coupe only)

Shaker™ 1000 Audio System with AM/FM stereo/single-CD player with MP3 capability, 10 speakers and 1000 watts (not available with Electronics Package)

SVT Performance Package includes 3.73 gear ratio with limited-slip differential, 19-in. x 9.5-in. painted, forged-aluminum wheels with P265/40R19 front tires, 20-in. x 9.5-in. painted, forged-aluminum wheels with P285/35R20 rear tires, unique front and rear springs, unique rear shocks, unique shift knob, unique Shelby stripes, unique bodyside stripes, unique spoiler with Gurney Flap, and under-belly aerodynamic shield

Tape stripe delete (standard with Charcoal Black leather seats with Black racing stripes)

Exterior Colors

Exterior Colors	Interior Colors				SVT Performance Package Stripes ¹		
Grabber Blue	■		■	■	◇		
Performance White		■	■	■		◇	◆
Kona Blue Metallic	■	■		■		◇	◆
Race Red	■			■			◆
Black	■	■	■	■			◆
Sterling Gray Metallic		■		■			◆
Ingot Silver Metallic				■			◆

Interiors: ■ Charcoal Black Leather with White Racing Stripes ■ Charcoal Black Leather with Silver Racing Stripes
 ■ Charcoal Black Leather with Grabber Blue Racing Stripes ■ Charcoal Black Leather with Red Racing Stripes
 ■ Charcoal Black Leather with Black Racing Stripes

SVT Performance Stripes: ◇ White with Black Accent ◆ Red with Black Accent ◆ Red with Silver Accent



19-in. x 9.5-in. Premium Painted-Aluminum Wheels with P255/40R19 Front and P285/35R19 Rear Tires Standard

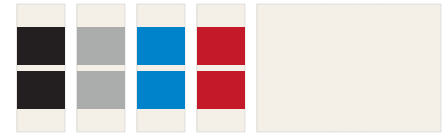


19-in. x 9.5-in. Painted, Forged-Aluminum Wheels with P265/40R19 Front and 20-in. x 9.5-in. Painted, Forged-Aluminum Wheels with P285/35R20 Rear Tires available with SVT Performance Package

EXTERIOR



Grabber Blue



Performance White



Kona Blue Metallic



Race Red



Black

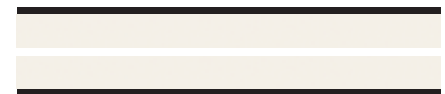


Sterling Gray Metallic



Ingot Silver Metallic

SVT PERFORMANCE PACKAGE STRIPES



White with Black Accent



Red with Black Accent



Red with Silver Accent

Colors shown are representative only. See your dealer for actual paint/trim options.

¹When ordered with Charcoal Black leather with Black racing stripes includes tape stripe delete.

Accessories

Detailed. Tested. Warranted. For enhanced looks. Or enhanced function.



Pedestal Rear Spoiler and Quarter Window Louvers



Chrome Billet-Style Grille and Front Lower Fascia



Rear Lower Fascia – Diffuser-Style



20-in. Chrome Wheel¹



18-in. Painted Dark Shadow Gray Wheel



18-in. 5-Spoke Chrome Wheel



19-in. Painted Foundry Black GT Wheel¹



Side Scoops



Remote Start System



All-Weather Floor Mats

Also available:

APPEARANCE

- Grilles
- Body Kit by 3dCarbon^{®2}
- Hood Scoop
- Ford Custom Graphics by Original Wraps[™] Inc.²
- Decklid Panels (V6, GT or GT500[®])
- Over-the-Top Racing Stripes
- Rear Spoilers

ELECTRONICS

- Front or Rear Bumper-Mounted Parking Assist System by EchoMaster^{®2}
- GPS Tracking and Recovery by SmartAlert^{™2}
- Subwoofer by MTX Audio^{®2,3}
- Backup Camera by AudioVox^{®2,3}
- Personal Navigation Devices by Garmin^{®2}
- Vehicle Security System
- Keyless Entry Keypad
- Windshield Wiper De-Icer and Debris Cleaner by Wiper Shaker²
- Illuminated Gear Indicator Shift Knobs by Gaslock[®] (manual transmission only)²

EXTERIOR

- Convertible Hard Tonneau Cover²
- Hood Deflector
- Side Window Deflectors
- Splash Guards
- Locking Fuel Plug
- Full Vehicle Covers
- Front End Covers

INTERIOR

- Soft Cargo Organizers (Large and Standard Sizes)
- Interior Soft Cargo Cooler Bag
- Cargo Area Protector (with and without Subwoofers)
- Universal Cargo Net
- Premium Carpeted Floor Mats
- Interior Sport Pedals
- Illuminated Sill Plate
- Interior Lighting Kit
- Ash/Coin Cup with or without Lighter
- Auto-Dimming Rearview Mirror

WHEELS

- Wheel Locks



Hood and Side Stripes

To learn more about Ford Custom Accessories and to buy them online, visit fordaccessories.com.

Genuine Ford Accessories will be warranted for whichever provides you the greatest benefit: 12 months or 12,000 miles (whichever occurs first), or the remainder of your Bumper-to-Bumper 3-year/36,000-mile New Vehicle Limited Warranty. Contact your local Ford Dealer for details and a copy of the limited warranty. Ford Licensed Accessories (FLA) are warranted by the accessory manufacturer's warranty. Ford Licensed Accessories are fully designed and developed by the accessory manufacturer and have not been designed or tested to Ford Motor Company engineering requirements. Contact your Ford Dealer for details regarding the manufacturer's limited warranty and/or a copy of the FLA product limited warranty offered by the accessory manufacturer.

¹Vehicle application and restrictions apply. See dealer for details. ²Ford Licensed Accessories. ³Available June 2010. SmartAlert is a registered trademark of Inlax, Inc. Garmin is a registered trademark of Garmin Ltd.

custom accessories



2011 MUSTANG

Specifications

fordvehicles.com



Drive one.