



# ROUSH Rear Fascia Valance Kit

Part Number 1310R011902

Application: 2010-11 Ford Mustang GT

## Installation Instructions

Before installing your ROUSH Performance Product(s), read through the entire installation procedure and check to make sure all items are present. Contact ROUSH Customer Service at 1-800-59-ROUSH, 9:00 AM to 5:00 PM EST, weekdays, for any questions regarding fit, missing parts or instructions that are unclear to you.





### Packaging List for ROUSH Rear Valance Kit

Part Description	ROUSH Part Number	Qty
<b>Rear Valance Kit</b>	<b>1310R011902</b>	<b>1</b>
Valance-Rear Fascia	131017F954	1
<b>Hardware Kit - Rear Valance</b>	<b>1310R011902HK</b>	<b>1</b>
Retainer - W-Clip Push Pin	W9X14	2
Installation Instructions	1310R17F954IM	1

### Equipment and Supplies Required

- Push Pin Tool - Fork
- Phillips Screw Driver – Short Stubby
- Small Straight Slot Screw Driver
- Ratchet – 1/4" Drive
- 11 mm Socket – 1/4" Drive

### Suggested Materials

5-6 ft table covered with cloth



## **LIMIT OF LIABILITY STATEMENT**

The information contained in this publication was accurate and in effect at the time the publication was approved for printing and is subject to change without notice or liability. ROUSH Performance Products (RPP) reserves the right to revise the information presented herein or to discontinue the production of parts described at any time.

## **SAFETY REQUIREMENTS**

**STOP! READ IMPORTANT SAFETY CAUTIONS AND WARNINGS BEFORE PROCEEDING.**

### **IMPORTANT SAFETY NOTICE**

Appropriate disassembly, assembly methods and procedures are essential to ensure the personal safety of the individual performing the kit installation. Improper installation due to the failure to correctly follow these instructions could cause personal injury or death. Read each step of the installation manual carefully before starting the actual installation.

1. Always wear safety glasses for eye protection.
2. Place ignition switch in the OFF position.
3. Always apply the parking brake when working on a vehicle.
4. Chock the front and rear tires to prevent unexpected vehicle movement.
5. If working without a lift, always consult vehicle manual for correct lifting specifications.
6. Operate the engine only in well-ventilated areas to avoid exposure to carbon monoxide.
7. Do not smoke or use flammable items near or around the fuel system.
8. Use chemicals and cleaners in well-ventilated areas.
9. Batteries produce explosive gases, which can cause personal injury. Therefore, do not allow flames, sparks or flammable substances to come near the battery.
10. Keeps hands and any other objects away from the radiator fan blades.
11. Keep yourself and your clothing away from moving parts when the engine is running.
12. Do not wear loose clothing or jewelry that can get caught in rotating parts or scratch surface finishes.
13. Allow the engine, cooling system, brakes and exhaust to cool before working on a vehicle.

### **WORK SAFELY!**

Perform this installation on a good clean level surface for maximum safety and with the engine turned off.

## Rear Fascia Assembly Removal

1. Open the trunk and slide the trunk floor carpet panel forward.

2. Remove four (4) panel retainers from the trunk rear plastic panel. Unscrew the top two (2) plastic fasteners and use a forked push pin tool for the bottom two (2) fasteners. Placing your finger tips into the cargo net hook openings, lift the panel straight up to disengage the two (2) retainer pins. Refer to Figure 1.



Figure 1

3. Roll the panel forward and disconnect the electrical connector from the trunk illumination lamp. Refer to Figure 2. Remove the panel from the trunk.



Figure 2

4. Disconnect the wire harness connector for the license lamp / rear side markers.
5. Using a forked push pin tool, remove one (1) wire harness retainer.
6. Follow this harness rearward to the wire harness grommet and push the grommet rearward.
7. Feed the connector and wiring through the grommet hole so it will not get snagged when removing the rear fascia.

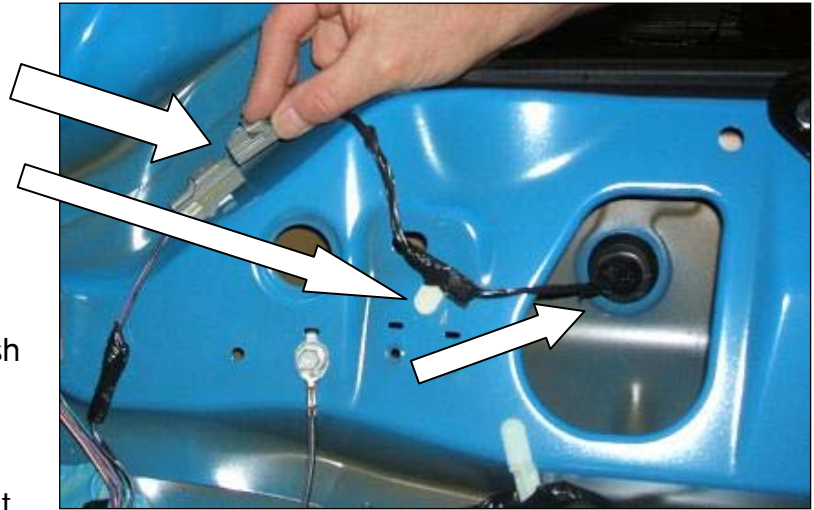


Figure 3

Refer to Figure 3 for steps 4, 5, 6 & 7.

8. Remove the rear license plate.
9. Using a short stubby screw driver, remove three (3) screws from each wheel well opening. Refer to Figure 4.

(Left side shown, right side similar)



Figure 4

(Left side shown, right side similar)

10. Disconnect the electrical connector at each tail light assembly.
11. Pull the trunk side liner forward to expose the tail lamp fasteners.
12. With an 11 mm socket and ratchet, remove the six (6) nuts. (three nuts per side)
13. Push the wire harness grommet and connector through the grommet hole and remove the tail light assemblies. Refer to Figure 5 for steps 10, 11, 12 & 13.

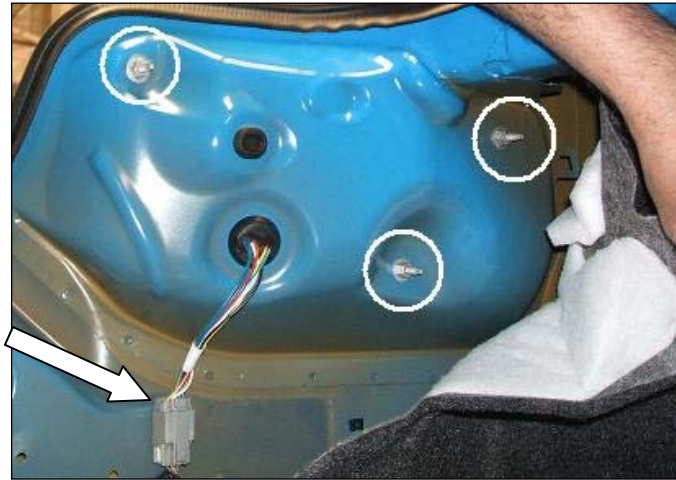


Figure 5

14. Remove four (4) push pins (two per side) from the LH & RH side lower valance mounting brackets. The push pins are a two (2) part push pin. Remove the center button first to release the barbs and then remove the push pin body. Refer to Figure 6.

(Left side shown, right side similar)

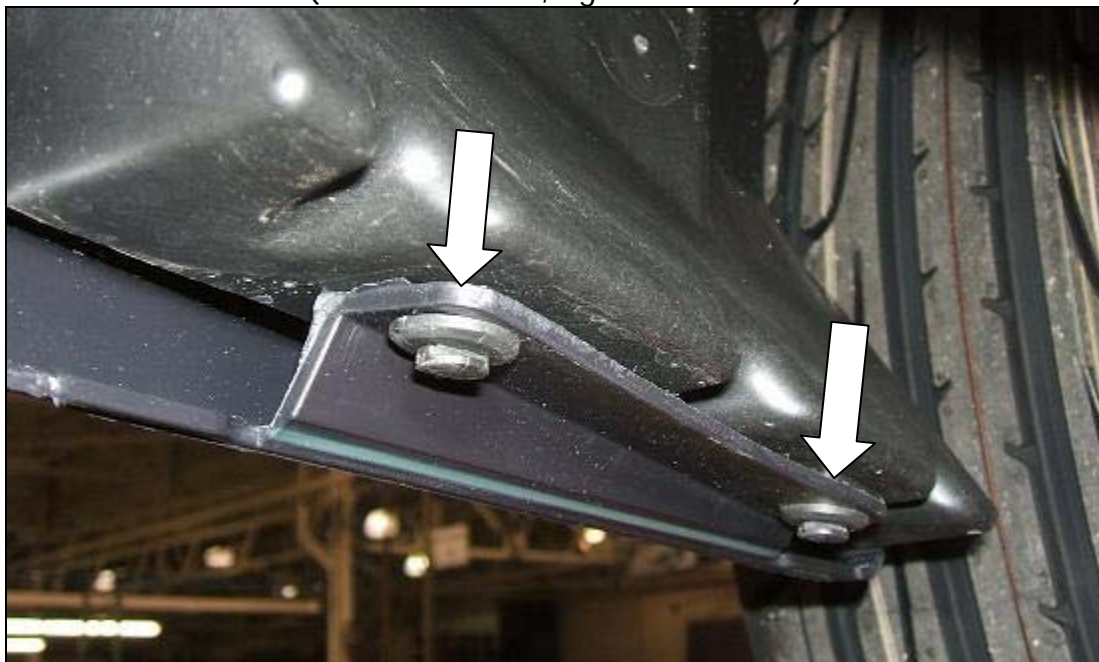


Figure 6

- Using a forked push pin tool, remove the two (2) bottom center W-Clip fasteners at the rear center valance attachment flange. Refer to Figure 7.

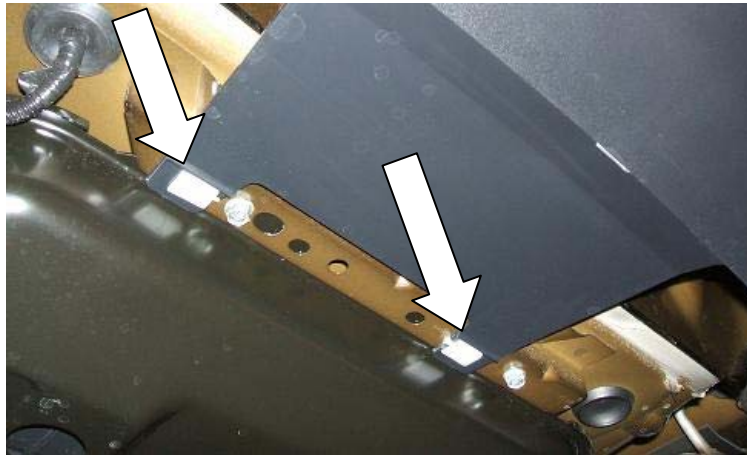


Figure 7

- With an assistant, remove the rear fascia/valance assembly.
  - Pull the sides out of the wheel well openings and disengage the side retainers.
  - Carefully disengage the left & right upper corner retainer by lifting the sides upward, rearward and off the retainer hooks. See inset.
  - Pull the rear fascia rearward to disengage the six (6) retainers. Four are located at the center section and two are at each rear corner bracket. See insets. Refer to Figure 8.

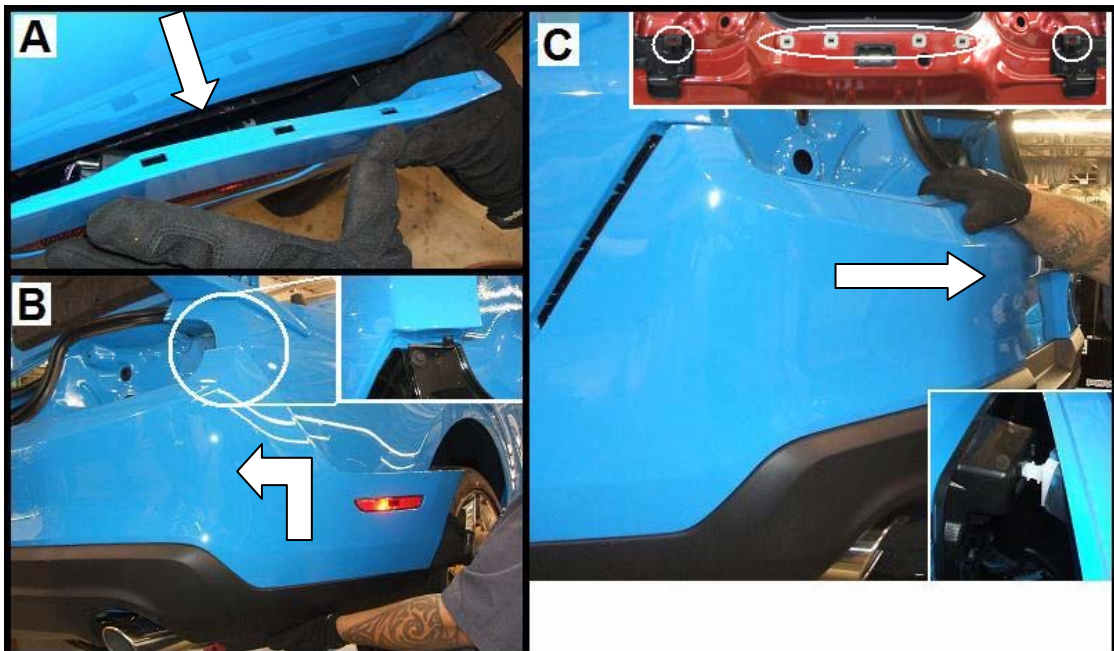


Figure 8

17. Place the rear fascia assembly onto a cloth covered table to avoid scratching the rear fascia and new valance.
18. Separate the Lower Valance from the Upper Fascia.
  - A) Using a forked push pin tool, disengage six (6) wire harness retainers (three per side) which are attached to the black lower valance.
  - B) Using a Phillips screw driver, remove four (4) screws (two per side) which attach the valance to the rear fascia sides.
  - C) Using a forked push pin tool, remove eight (8) push pins (four per side) which attach the valance to the rear fascia sides. The push pins are a two (2) part push pin. Remove the center button first to release the barbs and then remove the push pin body.
  - D) Disengage the twelve (12) retainer tabs and separate the lower valance from the rear fascia. Refer to Figure 9 for Steps A) – D).

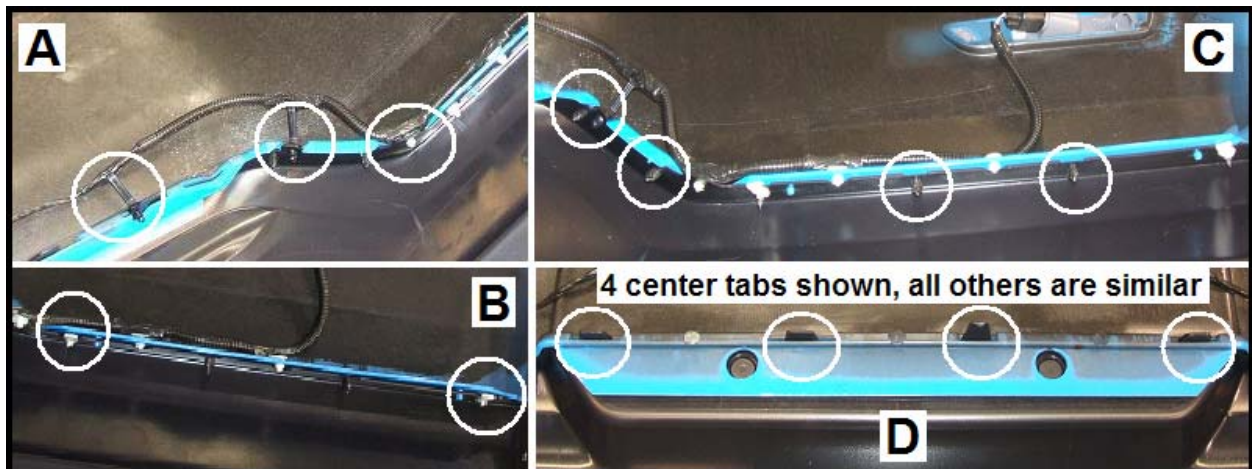


Figure 9

## **Install the ROUSH Lower Valance to the Rear Fascia**

19. Using a small screw driver, remove and transfer the four (4) spring nuts (two per side) from the factory lower valance to the ROUSH Lower Valance as shown in Figure 10.



Figure 10



# ROUSH

THE ART OF PERFORMANCE ENGINEERING

20. Position the ROUSH Lower Valance to the factory rear fascia. Starting at the right center, (see arrow in Fig. 11) snap the twelve (12) tabs on the Lower Valance to the slots in the rear fascia. Refer to Figure 11. The four (4) center tabs are shown. The other 8 (out of view) are similar. Ensure all twelve (12) are fully engaged. Refer to Figure 11 inset.

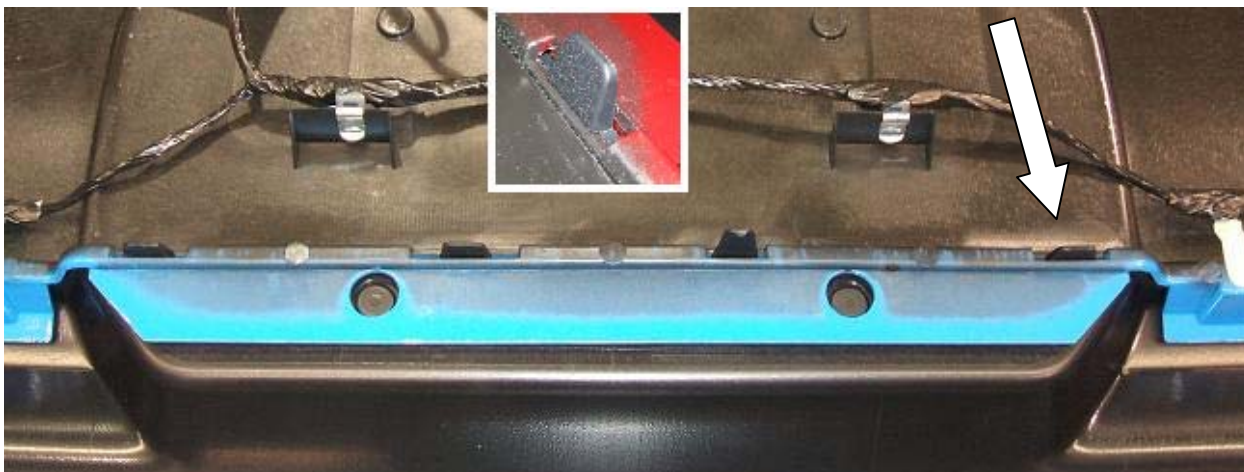


Figure 11

21. Reinstall four (4) screws (two per side) attaching the Lower Valance to the rear fascia. Refer back to Figure 9-B.
22. Reinstall eight (8) push pins (four per side) attaching the Lower Valance to the rear fascia. Refer back to Figure 9-C. Insert the push pin body first and then the center button.
23. Insert the six (6) wire harness retainers (three per side) into the holes on the Lower Valance. Refer back to Figure 9-A.
24. Install two (2) new W-Clip Push Pin fasteners at the Lower Valance center attachment flange. Slide the W-Clips into the slots with the pointers pointing inward as shown in Figure 12.



Figure 12

## Rear Fascia / Valance Installation

25. With an assistant, position the rear fascia assembly to the rear of the Mustang. Feed the wire harness and connector through the grommet hole. Press and seat the grommet into place. Refer back to Figure 3.
26. Align the four (4) rear fascia center retainers and the two (2) end retainers to the plastic inserts and press the rear fascia forward to fully engage the six (6) retainers. Refer back to Figures 8-C inset and Figure 13.

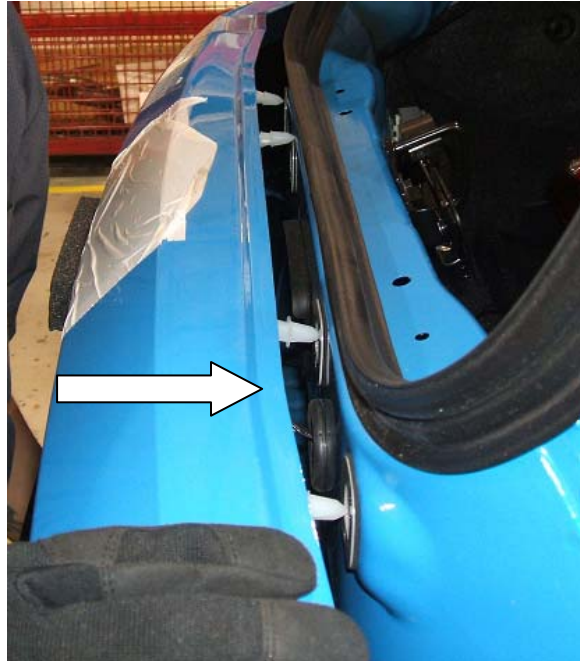


Figure 13

27. Press the LH and RH upper corner tabs onto the retainer hooks of the rear corner brackets. Refer back to Figure 8-B.
28. Press the rear bumper sides into the side retainers. Refer back to Figure 8-A.
29. Reinstall the six (6) screws into the wheel well openings (3 per side). Refer back to Figure 4.
30. By hand, bend the Valance lower side mounting flanges into position, aligning the holes. Reinstall the four (4) push pins (two per side) to the LH & RH lower side mounting brackets. Refer back to Figure 6. Insert the push pin body first and then the center button.
31. Press the two (2) W-Clip retainers on the lower center mounting flange to the holes in the underbody sheet metal. Refer back to Figure 7.
32. Reinstall the rear license plate.

33. Reinstall the left and right tail lamp assemblies. Feed the connector and wiring through the grommet hole. Press and seat the grommet into place. Reinstall the six (6) nuts (3 per side) and torque them to 6 Nm (53 lb-in). Return the trunk side liners to their original positions.
34. Reconnect the tail lamp wiring connectors to the body wiring harness connectors. Ensure the connectors are fully inserted. Refer back to Figure 5.
35. Reconnect the license lamp / rear side markers connector to the body wiring harness connector. Reinstall the harness retainer into its hole. Refer back to Steps 4 & 5 and Figure 3.
36. Position the trunk rear plastic panel and connect the wire harness connector to the trunk illumination lamp. Refer back to Figure 2.
37. Perform a functional check of the rear tail lamps, side markers, license plate lamps and trunk illumination. If OK, proceed. If not OK, check the connectors that were disconnected during installation of this kit.
38. Align the two (2) rear panel retainers (white arrows) and two (2) pilot pins (black arrows) to the holes in the body sheet metal and press the panel straight down to fully engage the retainers. Refer to Figure 14.



Figure 14

39. Align the lower holes in the panel to the holes in the sheet metal and reinstall the two (2) lower push pin retainers. Refer back to Figure 1.
40. Align the upper hole to the tail lamp studs and press on the top two retainers. Refer back to Figure 1.
41. Slide the trunk floor carpet panel rearward. Close and latch the trunk lid.

**Congratulations!!!** You have completed the installation of the ROUSH Performance Products, Rear Fascia Valance Kit. It is recommended that you save all parts removed from your vehicle during the installation of this kit.



## **WARRANTY**

All retail parts carry a 90-day warranty from the date of purchase. This warranty covers defects in materials or workmanship, and does not include (i) normal wear and tear, environmental conditions, improper installation; (ii) road hazards, misuse, abuse, neglect, accidents, collision, fire, theft, freezing, vandalism, riot, explosion, or objects striking the vehicle; (iii) misusing the vehicle, such as driving over curbs, overloading, racing, or using the vehicle as a stationary power source; (iv) altering, disassembling or modifying the parts; (v) defects caused or induced by failures, breakdowns, or damage by other parts, components or the vehicle; (vi) subjecting the parts to excessive moisture or water or any motor vehicle fluids (e.g.: oil, anti-freeze, battery acid, brake fluid, etc.); (vii) acts of God, natural disasters and other similar causes beyond the reasonable control of ROUSH; or (viii) application of chemicals that affect the parts. This Limited Warranty does not cover surface deterioration of paint, trim, and appearance items that result from use and/or exposure to the elements, such as stone chips, scratches, bird droppings, lightning, hail, windstorm, dings, dents, earthquake, road salt, tree sap, water or flood.

ROUSH SHALL NOT BE LIABLE TO REIMBURSE CUSTOMER/DEALER FOR INCIDENTAL OR CONSEQUENTIAL DAMAGES RESULTING FROM THE INSTALLATION OR USE OF ANY PRODUCT SOLD THROUGH THIS CATALOG OR ARISING OUT OF ANY BREACH OF WARRANTY. EXCEPT AS MAY BE STATED IN THIS CATALOG, ROUSH DISCLAIMS ALL EXPRESS AND IMPLIED WARRANTIES, INCLUDING THE WARRANTIES OF MERCHANTABILITY AND FITNESS FOR A PARTICULAR PURPOSE. IN NO EVENT SHALL ROUSH'S LIABILITY EXCEED THE PRICE PAID BY CUSTOMER/DEALER FOR PRODUCTS SOLD REGARDLESS IF ROUSH HAS BEEN ADVISED IN ADVANCE OF ANY POTENTIAL PROBLEM OR IF A CLAIM IS BASED ON CONTRACT, TORT, STRICT LIABILITY, PRODUCT LIABILITY OR OTHERWISE. SOME STATES DO NOT ALLOW THE EXCLUSION OR LIMITATION OF IMPLIED WARRANTIES OR THEIR DURATION, OR LIABILITY FOR INCIDENTAL OR CONSEQUENTIAL DAMAGES, SO THE ABOVE EXCLUSIONS OR LIMITATIONS MAY NOT APPLY.