

SECTION 303-01B Engine — 5.0L (4V)

CONTENTS	PAGE
DESCRIPTION AND OPERATION	
Engine	303-01B-2
Engine Identification	303-01B-2
Engine Code Information Label	303-01B-2
Engine Cylinder Identification	303-01B-3
Induction System	303-01B-3
Crankshaft	303-01B-3
Camshafts	303-01B-3
Valve Train	303-01B-3
Twin Independent Variable Camshaft Timing (VCT) System	303-01B-3
PCV System	303-01B-3
Engine Lubrication System	303-01B-3
Oil Pump	303-01B-4
Engine Oil Flow Illustration	303-01B-4

DESCRIPTION AND OPERATION

Engine

The 5.0L (302 CID) is a V-8 engine with the following features:

- Dual overhead camshafts
- Four valves per cylinder
- Sequential Multi-Port Fuel Injection (SFI)
- Aluminum cylinder heads
- Aluminum, 90-degree V-cylinder block
- Individually chain-driven camshafts with a hydraulic timing chain tensioner on each timing chain
- Electronic ignition system with 8 ignition coils

The Boss® 302 is equipped with a high performance version of the 5.0L (302 CID) engine with the following unique components:

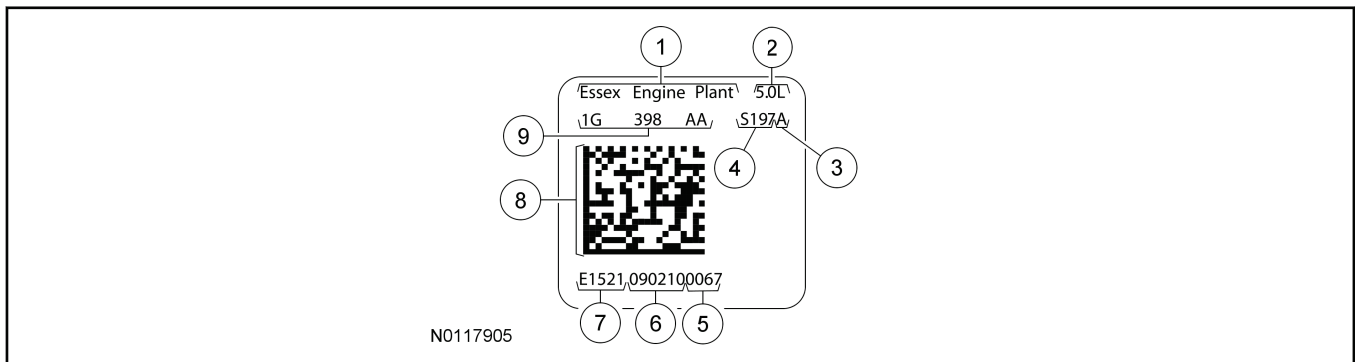
- Runners-in-a-box intake manifold
- Cylinder heads
- Camshafts
- Valves
- Pistons, rings and connecting rods
- Main and rod bearings
- Oil plugs in lieu of piston cooling jets
- Oil cooler

Engine Identification

Always refer to these labels when installation of new parts is necessary or when checking engine calibrations. The engine parts often differ within a CID family. Verification of the identification codes will make sure that the correct parts are obtained. These codes contain all the pertinent information relating to the dates, optional equipment and revisions. The Ford Master Parts Catalog contains a complete listing of the codes and their applications.

Engine Code Information Label

The engine code information label, located on the valve cover, contains the following:



Item	Description
1	Essex engine plant
2	Engine displacement
3	Transmission
4	Vehicle line
5	Sequential number
6	Engine build date (DDMMYY)
7	Essex engine plant
8	Bar code
9	Engine part number