

TPMS Warranty

Examples of Non-Warrantable Parts:



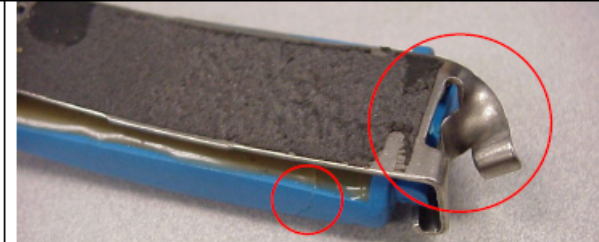
Broken CPA Retaining feature and Hinge tabs.



Sensor broken by Tire Changer Bead Breaker Paddle.



Hinge Tab torn by improper tire removal.



Sensor cracked by improper tire removal.



Cradle damaged from driving on flat tire.



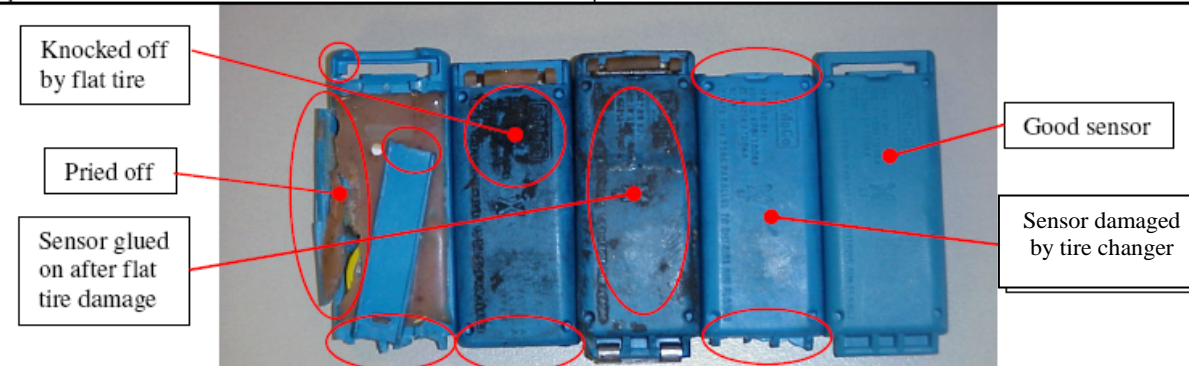
Driven on a flat tire. All four sensor feet are crushed.



Sensor damage due to driving on flat tire for extended period. Tire material embedded in sensor.



Air Intake Port plugged with tire material.



3 of the 4 sensors damaged due to improper removal or installation.