

# Direct Connect iPod Adapter

## Ford Mustang Installation Guide



Connection to factory AM/FM/AUX Radio or factory Satellite Radio

Equipped with Single CD, CD6 or Audiophile RADIO  
Or with any of the above plus a SIRIUS SATELLITE RECEIVER

## Contents

- 1 Congratulations / Contact info
- 2 Parts List / Tools Required
- 3 Non-Satellite Installation  
Radio Connection / Configuration
- 8 Satellite Receiver Connection / Configuration

## Congratulations / Contact info

You've purchased a Brandmotion iPod Adapter System designed, engineered, and built specifically for your Ford vehicle. We have made every effort to ensure that your Brandmotion iPod Adapter meets the highest quality standards in terms of fit, durability, finish and ease of installation

At Brandmotion, we are automotive interior "real estate developers". We look over the horizon to understand what automotive consumers want inside their vehicles. With our market knowledge and design expertise, we develop unique, high value, integrated accessories to fill those wants.

Our products are designed to auto industry standards, produced for seamless integration, and engineered for Plug-and-Play installation. We work directly with car companies to develop interior accessories simultaneously with their new vehicles.

If you have specific questions about your Brandmotion product or wish to place another order, please contact.

Brandmotion Operations Center

2328 Alger Drive

Troy, MI 48083

Website: [www.brandmotion.com](http://www.brandmotion.com)

e-mail us:

[customer.support@brandmotion.com](mailto:customer.support@brandmotion.com)

Phone: 877-276-6456

Fax: 480-247-5999

## Parts Required

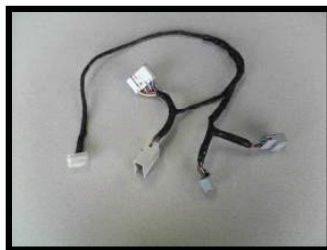
### Satellite and Non-Satellite Parts



Adapter Box

iPod Connection  
Cable

### Non-Satellite Part ONLY



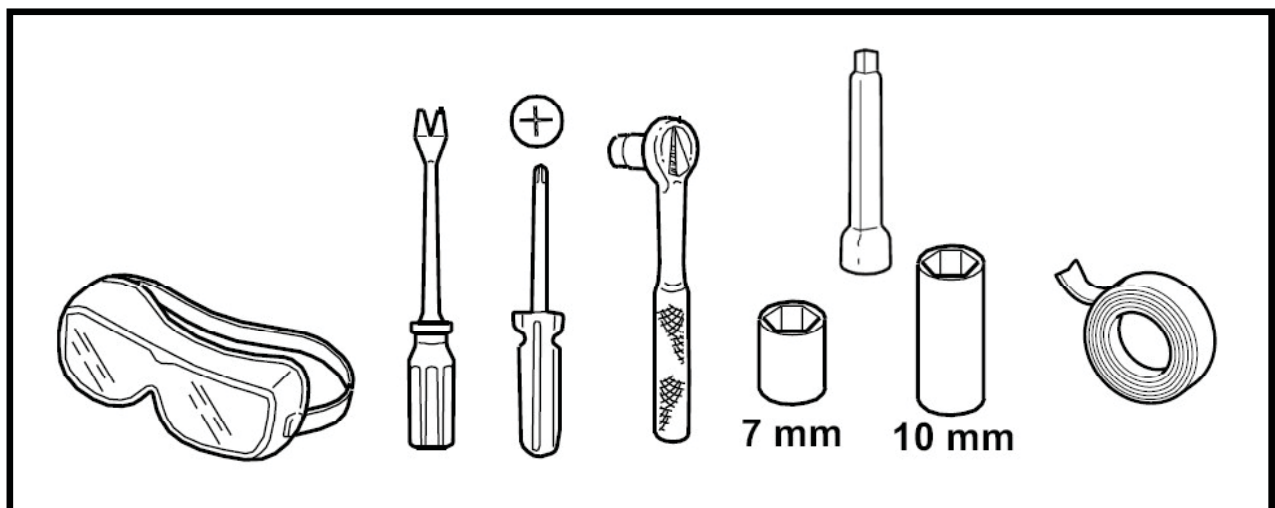
Radio Short  
Harness

### Satellite Part ONLY



Satellite Long  
Harness

## Tools Required



# Non-Satellite Installation

## Radio Connection

This section pertains to Ford Mustang vehicles that do not have a factory-installed satellite receiver.

To install the iPod Adapter you will need to access the back of the OEM radio in your vehicle. Specific instructions for removing the trim in your vehicle are included in this guide.

If you are not confident that you can safely remove your interior trim to perform the installation, contact your dealer or a competent mechanic for assistance.

## Radio Configuration

1. You should be installing you Brandmotion iPod Adapter into a Ford Mustang with an OEM radio that is similar to this picture.

2. Lift off the shifter trim ring.



3. Apply the parking brake by lifting up.



4. Remove the two Phillips-head fasteners on the rear of the center console housing.



5. Lift up the center console housing starting at the rear corners.



6. Remove both HVAC trim panels.



7. Remove the six 7mm hex-head fasteners that hold the HVAC bezel.

8. Pry up the HVAC bezel starting at any corner.

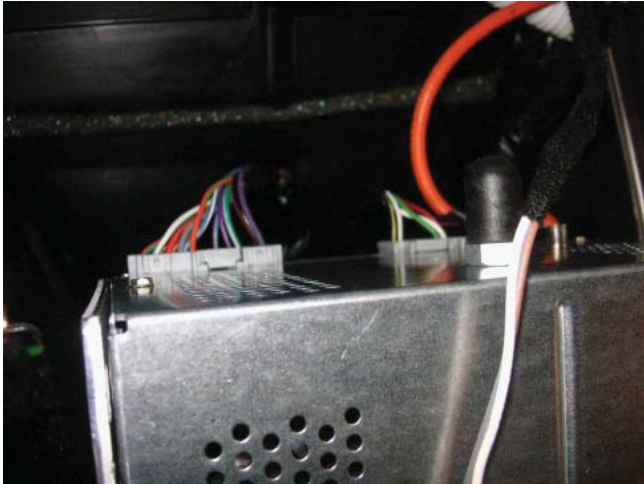


9. Remove the four 7mm hex-head fasteners from the radio.

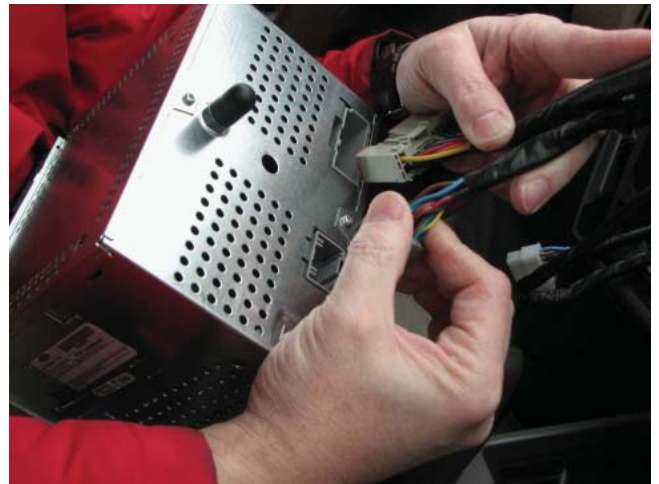
10. Pull the radio out.



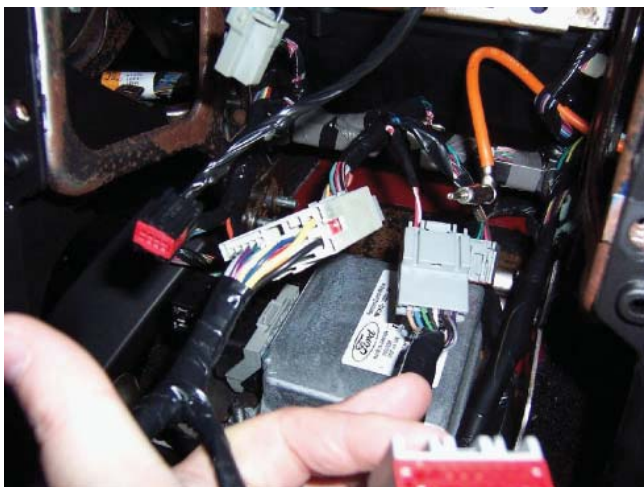
11. Disconnect the 24 pin & 16 pin connectors from the back of the radio.



12. Connect the iPod Adapter Vehicle Harness to the radio.



13. Connect the other end of the adapter to the vehicle harness.



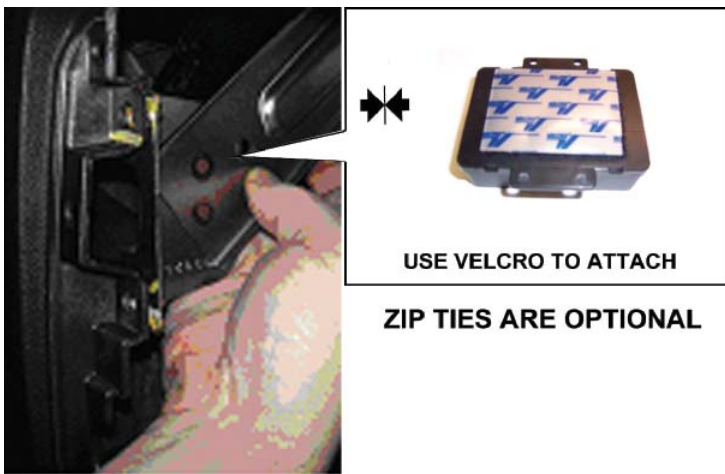
14. Connect the harness, and the iPod Connection Cable to the Adapter box.



15. Secure the iPod Adapter box to the vehicle in a location that won't interfere with any other equipment.

16. Route the iPod Connection Cable through your vehicle to a location near where you want to locate your iPod.

If your location cannot be reached by the 1 meter cable, you may need to mount the Adapter box closer to the iPod location.



17. Test the system for functionality before you re-install your vehicle trim.  
See the owner's manual for operating instructions.

**AVOID ANY MOVING PARTS or SHARP EDGES – for example; VACUUM MOTORS, BRACKETS etc.**

**REVERSE TRIM REMOVAL STEPS FOR RE-INSTALLATION**

This unit is designed for negative ground 12 V DC operation only.

Do not pinch the wires under a screw, or in moving parts (seat railing, etc.)

Before making connections, turn the car ignition off to avoid short circuits.

Be sure to insulate any loose, unconnected leads with electrical tape for safety.



# Satellite Installation

## Satellite Receiver Connection

This section pertains to Ford Five Hundred / Mercury Montego vehicles that have a factory-installed satellite receiver.

To install your iPod Adapter you will need to access the satellite receiver in your vehicle. Specific instructions for removing the trim in your vehicle are included in this guide.

Your satellite receiver is located in the trunk, on the passenger side fender, behind the carpet panel. You will need to move the carpet panel to access the satellite receiver.

If you are not confident that you can safely remove your interior trim to perform the installation, contact your dealer or a competent mechanic for assistance.

## Satellite Configuration

You should be installing your Brandmotion iPod Adapter into a Ford Five Hundred / Mercury Montego vehicle with a Sirius Satellite Receiver and an OEM radio that is similar to the pictures shown.



1. If your vehicle is equipped with the sub-woofer & amplifiers, remove the four 10 mm hex-head fasteners from the rear audio cluster in the trunk.



2. Remove the 10 mm hex-head fasteners and lift the remaining audio components away from the side of the trunk.



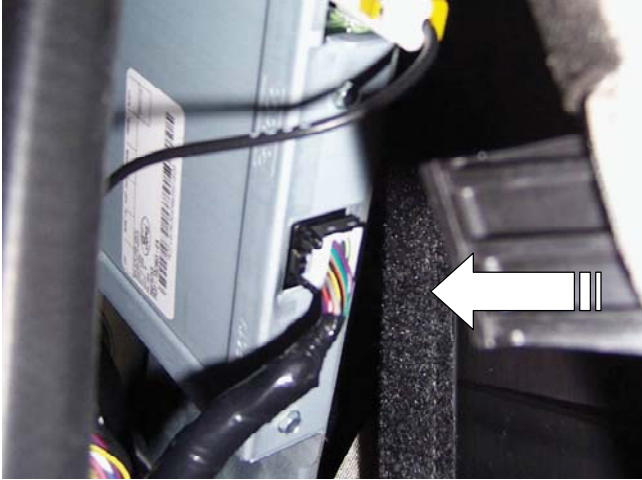
3. The satellite receiver is located behind the trunk lining.



4. Remove the 10 mm hex-head fasteners from the satellite receiver bracket.



5. Disconnect the plug from the Sirius Satellite Receiver.



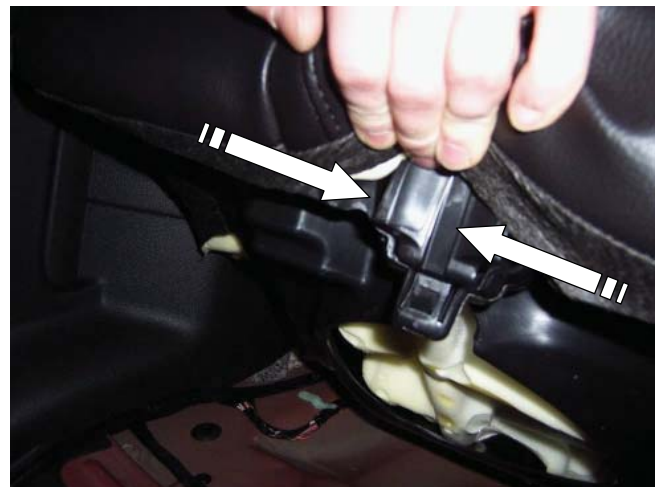
6. Connect the iPod Adapter Vehicle Harness to the receiver & to the vehicle harness.



7. Route the harness forward behind the trunk liner to the rear seat.



8. Lift up the rear seat by pressing the two tabs on each side of the rear seat bottom. Tuck the harness beside the rear seat.



9. Loosen the rear quarter panel to route the harness underneath.



10. Remove the christmas tree fastener.



11. Lift the rear trim piece & route the harness underneath towards the door sill.



12. View of the harness routed through the rear trim piece. Continue feeding the harness forward to the front of the vehicle.



13. Remove the passenger side front door sill plate.



14. Remove the passenger side kick panel by pulling straight back to release the clips.



15. Open the glove box and squeeze the sides of the glove box to bypass the stop blocks.



16. Route the harness up through the corner of the dash and pull the harness across the back of the glove box area.



17. TConnect the harness, and the iPod Connection Cable to the Adapter box.



18. Connect the harness, and the iPod Connection Cable to the Adapter box.

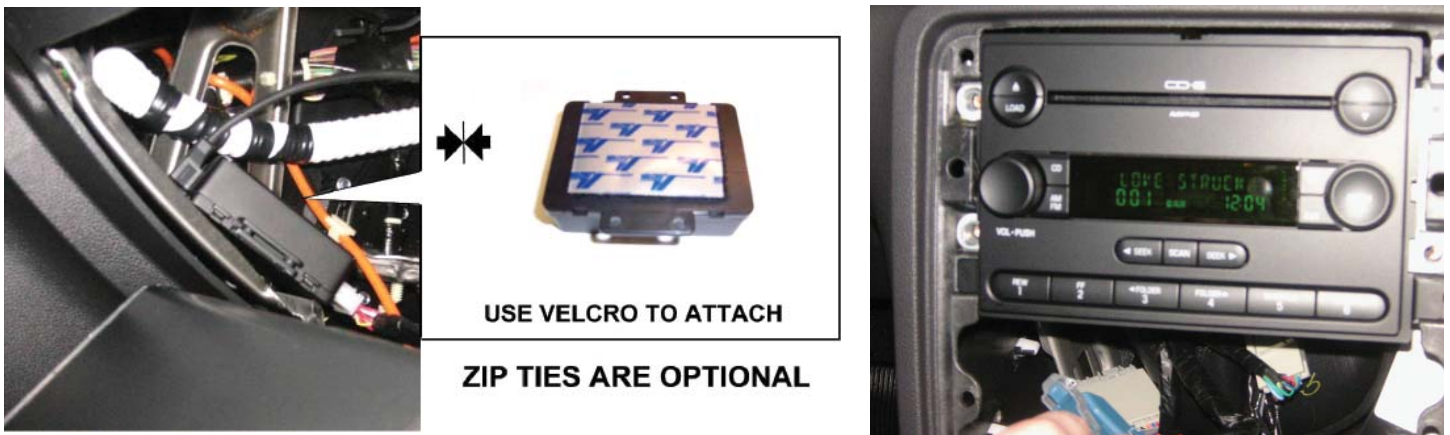


19. Mount the box to the underside of the dash.

20. Route the iPod Connection Cable through your vehicle to a location near where you want to locate your iPod.

Remember, you'll need to be able to disconnect your iPod to listen to the Satellite Radio.

If your location cannot be reached by the 1 meter cable, you may need to mount the Adapter box closer to the iPod location.



23. Test the system for functionality before you re-install your vehicle trim.  
See the owner's manual for operating instructions.

**AVOID ANY MOVING PARTS or SHARP EDGES – for example; VACUUM MOTORS, BRACKETS etc.**

**REVERSE TRIM REMOVAL STEPS FOR RE-INSTALLATION**

This unit is designed for negative ground 12 V DC operation only.

Do not pinch the wires under a screw, or in moving parts (seat railing, etc.)

Before making connections, turn the car ignition off to avoid short circuits.

Be sure to insulate any loose, unconnected leads with electrical tape for safety.