

2005-2009 Mustang Raxiom OE-Style GPS Navigation w/ Back-Up Camera!

REPLY



1/9

NEXT

LAST



Supporting Vendor



Join Date: July 5, 2011

Posts: 729

Malvern, PA

0 Thanks

AMDanBailer

3/27/15, 11:07 AM #1

2005-2009 Mustang Raxiom OE-Style GPS Navigation w/ Back-Up Camera!

Hey Guys,

You asked for it.. and the guys at Raxiom delivered again! They just released their brand new [2005-2009 Raxiom Navigation System with Bluetooth & back-up Camera](#) with a beautiful high-res 6.5" LCD Touch-Screen! This system features the following:

- Navigation Multi-Media System with iGO Primo Software
- 6.5" Hi-Res Touch-Screen LCD
- Built in AM/FM/Satellite Radio tuner
- Plays DVD's, CD's, and MP3's
- Parrot Bluetooth - Android and Apple Compatible
- 8 Language Voice Options
- Includes Full Color Back-up Camera
- Full Warranty

The Raxiom's Navigation System uses iGO Primo software with TomTom maps. Features include Talk-to-Text to modify navigation, Voice and Visual turn-by-turn routing directions, including 2D and 3D screen views, as well as 3D landmarks. This system fills a large void for the 2005-2009 Mustang owners who weren't able to order their Mustang with a Navigation system but would like to have one. The system is very affordable at \$749.99 when you consider everything you're getting with this plug and play system! This kit will take roughly 2 hours to install and will come with detailed instructions. These systems are in stock and ready to ship for your S197 Mustang today!

Feel free to comment below with any feedback and/or questions you guys may have!

An error occurred.

-Dan

[Try watching this video on www.youtube.com](#), or enable JavaScript if it is disabled in your browser.

Dan Bailer | [AmericanMuscle.com](https://www.americanmuscle.com)

Toll Free: 866.727.1266 | **Mon-Fri** 9AM-9PM **Sat** 10AM-4PM EST

Bama Direct: 888.226.9764 | **Mon-Fri** 9AM-5:30PM EST

FREE SAME-DAY SHIPPING IN THE US-48 AND PRICE MATCHING!

Quick Reply

Quote

Multi Quote

THANKS



Shelby GT350 Member



Join Date: November 7, 2006

Posts: 2,385

Alberta

0 Thanks

jim010

3/29/15, 09:42 AM #2

Can an existing camera be used with this?

Is there USB on this? Didn't see it in the description.

And by retaining steering wheel controls - S197 didn't have any for the radio. Does this mean it can be added? For example, if I were to put in a steering wheel from a 10-14 Mustang that had the Sync, phone, tuning and volume controls on the wheel?

Can the startup screen be changed?

Any 'in motion' options?

"Pain? Pain is like love ... like compassion. It is a thing for lesser men. What is pain to Doom?" Doctor Doom

Last edited by jim010; 3/31/15 at 10:31 AM.

Quick Reply

Quote

Multi Quote

THANKS



GTR Member



Join Date: May 10, 2006

Posts: 4,621

Carnegie, PA

12 Thanks

Posted By: jim010

Can an existing camera be used with this?

Is there USB on this? Didn't see it in the description. And by retaining steering wheel controls - S197 didn't have any for the radio. Does this mean it can be added? For example, if I were to put in a steering wheel from a 10-14 Mustang that had the Sync, phone, tuning and volume controls on the wheel?

Jim ! I would ask Dan from AM about this, as he would be the best person to address your questions 😊

Current mods - Saleen series VI S/C - 39lb injectors - 3.6" pulley - Eibach pro kit springs - Magnaflow cat back exhaust - 20" Bullit chrome wheels - Cervini 1/4 window louvers - Eibach camber bolts - Bob's autosports oil separator - CFM billet valve cover breather - Hurst short throw shifter - Koni sport adj struts/shocks - FRPP strut mounts - Genesis hood struts - FRPP 4:10 rear axle gears - Saleen extreme 98mm intake w/stock airbox- Autolite HT0 spark plugs - Brenspeed 91 oct Saleen calibration..

Current Stang - 2006 Torch Red GT - Previous Stangs - 2005 GT - 93 SVT Cobra - 92 GT - 90 GT - 82 Mercury Capri 5.0 - 78 Mustang II/King Cobra..

Well isn't that cute, but it's wrong !

Quick Reply

Quote

Multi Quote

THANKS



Shelby GT350 Member



Join Date: November 7, 2006

Posts: 2,385

Alberta

0 Thanks

jim010

3/31/15, 10:30 AM #4

Dan did say to comment here, though.

"Pain? Pain is like love ... like compassion. It is a thing for lesser men. What is pain to Doom?" Doctor Doom

Quick Reply

Quote

Multi Quote

THANKS



Shelby GT350 Member



Join Date: February 24, 2005

Posts: 2,164

Delray Beach , FL

2 Thanks

05YellowGT

3/31/15, 11:04 AM #5

Jim, if you look at the pictures on the web site there appears to be a USB cable attached to the back of the unit.

PERFORMANCE:

MagnaCharger , Steeda 90mm CAI, FRPP Hot Rod Cams, FRPP 62mm TB, MagnaFlow Axle Back Exhaust, BBK Long Tubes & catted X-Pipe, GT500 fuel pumps, WeaponX COP's.

SUSPENSION/DRIVETRAIN:

Steeda : Sport springs, HD duty upper strut mounts, Bumpsteer, 3 point frame rail &

torque box brace, billet LCA's and relocation brackets, Comp Upper 3rd Link , heavy duty engine mounts, G-trac Brace, Aluminium Drive shaft, adj pan hard bar and brace.

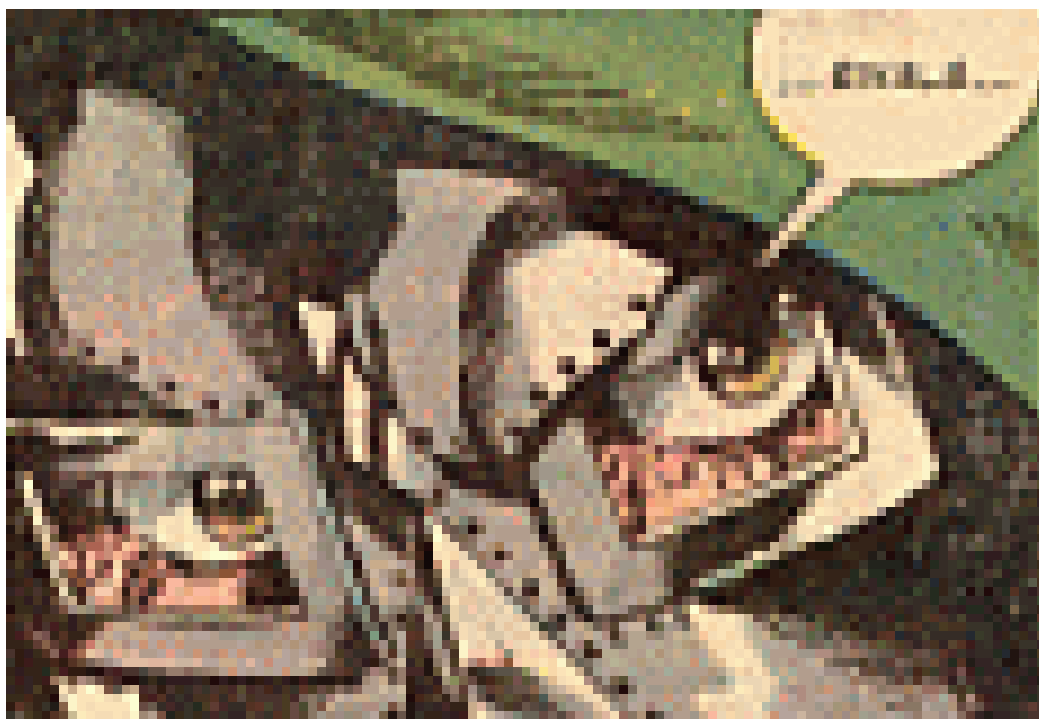
Koni Yellows, GT500 front LCA, FRPP 373 gears, BMR strut tower brace, MGW shifter, Exedy MACH 500 clutch, FRPP SS clutch line, FRPP Brembo Brakes.

Quick Reply

Quote

Multi Quote

THANKS



Shelby GT350 Member



Join Date: November 7, 2006

Posts: 2,385

Alberta

0 Thanks

Posted By: [05YellowGT](#)

Jim, if you look at the pictures on the web site there appears to be a USB cable attached to the back of the unit.

Missed that. I was thinking it would be in the front. thanks.

Still wondering about the other questions though.

"Pain? Pain is like love ... like compassion. It is a thing for lesser men. What is pain to Doom?" Doctor Doom

Quick Reply

Quote

Multi Quote

THANKS



Cobra Member



Join Date: August 17, 2007

Posts: 1,035

Aldie, VA

0 Thanks

MadGT

4/3/15, 03:10 PM #7

How do you update the Map in the Navigation system? With my Garmin, portable GPS I have to plug it online from time to time to get an update.

2006 Black Vert, auto, GMS CAI 91 Tune Brenspeed, Roush Front Fascial/Scoop/Chin Spoiler/Nitto 555, 18X9 DD Chrome Bullit, GT500 rear spoiler, Steeda Billet LCA, chrome valve covers, BBK Ceramic Shorties, slotted/drilled rotors, engine compartment and interior eyecandy

[Quick Reply](#)

[Quote](#)

[Multi Quote](#)

[THANKS](#)



Mach 1 Member



Join Date: February 15, 2005

Posts: 628

0 Thanks

jwgroovin

4/3/15, 03:35 PM #8

Yeah, what about updates (free, cost?), where is the bluetooth microphone, can the GPS antenna be installed INSIDE the car with good results (other year models have done this)...I'd love to buy one of these...

2005 Mustang GT, 2014 Focus ST

Quick Reply

Quote

Multi Quote

THANKS



Cobra Member



Join Date: August 17, 2007

Posts: 1,035

Aldie, VA

0 Thanks

MadGT

4/3/15, 03:44 PM #9

Yup, I have a convertible so the GPS antennae will be an interesting item to install.

2006 Black Vert, auto, GMS CAI 91 Tune Brenspeed, Roush Front Fascial/Scoop/Chin Spoiler/Nitto 555, 18X9 DD Chrome Bullit, GT500 rear spoiler, Steeda Billet LCA, chrome valve covers, BBK Ceramic Shorties, slotted/drilled rotors, engine compartment and interior eyecandy

Quick Reply

Quote

Multi Quote

THANKS



GTR Member



Join Date: May 10, 2006

Posts: 4,621

Carnegie, PA

12 Thanks

m05fastbackGT

4/3/15, 03:49 PM #10

Posted By: jim010

Dan did say to comment here, though.

My apologies Jim, I must had missed it 🙄

Current mods - Saleen series VI S/C - 39lb injectors - 3.6" pulley - Eibach pro kit springs - Magnaflow cat back exhaust - 20" Bullit chrome wheels - Cervini 1/4 window louvers - Eibach camber bolts - Bob's autosports oil separator - CFM billet valve cover breather - Hurst short throw shifter - Koni sport adj struts/shocks - FRPP strut mounts - Genesis hood struts - FRPP 4:10 rear axle gears - Saleen extreme 98mm intake w/stock airbox- Autolite HT0 spark plugs - Brenspeed 91 oct Saleen calibration..

Current Stang - 2006 Torch Red GT - Previous Stangs - 2005 GT - 93 SVT Cobra - 92 GT - 90 GT - 82 Mercury Capri 5.0 - 78 Mustang II/King Cobra..

Well isn't that cute, but it's wrong !

[Quick Reply](#)

[Quote](#)

[Multi Quote](#)

[THANKS](#)



Shelby GT350 Member



Join Date: November 13, 2005

Posts: 2,045

1 Thanks

mrkabc

4/5/15, 09:37 AM #11

I'm in for this bad boy!!!!

I tried the stock NAV unit back in 2007 from KC from Clevenger Ford and it was a total fail with the Shaker 1000.

When I get it and install it (yes, I will install myself!) I'll report back to you guys.

I can't wait!!!

2005 Mustang GT 5spd Premium Convertible *(with 18" 2015 GT wheels and Shaker 1000!)*

Performance Mods: C&L Trueflow CAI and Bamachips XCal2 91 Torque, Flowmaster ATs, Steeda UDPs, FRPP strut tower brace, MGW shifter.

Other Mods: Ford OEM HID headlights, Raxiom Gen5 LED Tail Lights, LED Fog Lights and NAV unit, GT500 spoiler, GT/CS scoops, CDC Detail Corral, Gentex compass/temp/Homelink, Webelectric Pony Corral, Clear switchback LED turn signals, MRT Hood Struts, Smoked LED 3rd Brake Light, interior bling parts.

Future Mods: None, I'm good! =)

Quick Reply

Quote

Multi Quote

THANKS



Cobra Member



Join Date: August 17, 2007

Posts: 1,035

Aldie, VA

0 Thanks

MadGT

4/5/15, 03:18 PM #12

Please do!

2006 Black Vert, auto, GMS CAI 91 Tune Brenspeed, Roush Front Fascial/Scoop/Chin Spoiler/Nitto 555, 18X9 DD Chrome Bullit, GT500 rear spoiler, Steeda Billet LCA, chrome valve covers, BBK Ceramic Shorties, slotted/drilled rotors, engine compartment and interior eyecandy

Quick Reply

Quote

Multi Quote

THANKS



Shelby GT350 Member



Join Date: February 24, 2005

Posts: 2,164

Delray Beach , FL

2 Thanks

05YellowGT

4/6/15, 03:43 AM

#13

Posted By: MadGT

How do you update the Map in the Navigation system? With my Garmin, portable GPS I have to plug it online from time to time to get an update.

I'm not sure about this unit, but my Clarion updates the maps using a micro SD card, so this one probably does too or uses a USB.

PERFORMANCE:

MagnaCharger , Steeda 90mm CAI, FRPP Hot Rod Cams, FRPP 62mm TB, MagnaFlow Axle Back Exhaust, BBK Long Tubes & catted X-Pipe, GT500 fuel pumps, WeaponX COP's.

SUSPENSION/DRIVETRAIN:

Steeda : Sport springs, HD duty upper strut mounts, Bumpsteer, 3 point frame rail & torque box brace, billet LCA's and relocation brackets, Comp Upper 3rd Link , heavy duty engine mounts, G-trac Brace, Aluminium Drive shaft, adj pan hard bar and brace.

Koni Yellows, GT500 front LCA, FRPP 373 gears, BMR strut tower brace, MGW shifter, Exedy MACH 500 clutch, FRPP SS clutch line, FRPP Brembo Brakes.

[Quick Reply](#)

[Quote](#)

[Multi Quote](#)

[THANKS](#)



I tweaked the button...
...and got lucky!



Join Date: February 2, 2004

Posts: 5,142

Insane

9 Thanks

houtex

4/6/15, 07:40 PM #14

Want. 🤔

Can't. 😞

Not yet anyway. 🙄

houtex

Awesome: My 2006 Mustang GT Coupe, Performance White, Charcoal Interior. Mods so far: GT/CS Front and Rear Bumpers, HR010 Hot Rod Black lower trim, Custom Blackened Dash Panels, 2010 GT500 Vert Wheels, GTA Axle-backs, Koni STR.Ts, Eibach GT500 Sway Bars, Ford 1" P Springs, GT500 Front Arms, BMR Poly-Poly LCAs and Panhard, Shelby Grille, Cobra R hood, V6/KR Spoiler, Powered by Ford Badges.

Ride, the Copper and Gold PC800 of Win:<http://i.imgur.com/eiECkMg.jpg>

In memory of my dearly missed Muskrat (RIP)

Quick Reply

Quote

Multi Quote

THANKS



Member

Join Date: March 7, 2013

Posts: 2

0 Thanks

xxdeletexx

Last edited by Gignator; 4/7/15 at 08:28 PM.

Quick Reply

Quote

Multi Quote

THANKS



GT Member



Join Date: March 14, 2013

Posts: 144

BX, NY

0 Thanks

Please let me know if I can install this in my 06 GT along with the 2010 Boss 302 steering wheel and have the radio controls on the wheel work. If it does, I'll buy the setup tomorrow.

My 6th Ford and finally a Mustang!
2006 Mustang GT Convertible "Black & Tan"

[Quick Reply](#) [Quote](#) [Multi Quote](#) [THANKS](#)



Shelby GT350 Member



Join Date: February 24, 2005

Posts: 2,164

Delray Beach , FL

2 Thanks

05YellowGT

4/8/15, 03:28 AM #17

He posted this on 3/27 and hasn't answered any questions yet, so good luck on tomorrow 😊

PERFORMANCE:

MagnaCharger , Steeda 90mm CAI, FRPP Hot Rod Cams, FRPP 62mm TB, MagnaFlow Axle Back Exhaust, BBK Long Tubes & catted X-Pipe, GT500 fuel pumps, WeaponX COP's.

SUSPENSION/DRIVETRAIN:

Steeda : Sport springs, HD duty upper strut mounts, Bumpsteer, 3 point frame rail & torque box brace, billet LCA's and relocation brackets, Comp Upper 3rd Link , heavy duty engine mounts, G-trac Brace, Aluminium Drive shaft, adj pan hard bar and brace.

Koni Yellows, GT500 front LCA, FRPP 373 gears, BMR strut tower brace, MGW shifter, Exedy MACH 500 clutch, FRPP SS clutch line, FRPP Brembo Brakes.

Quick Reply

Quote

Multi Quote

THANKS



Fist of the North Star
TMS Staff



Join Date: January 30, 2004

Posts: 10,412

Canada

0 Thanks

Boomer

4/8/15, 11:52 AM #18

Yeah interested to hear about that.

Installed a GT500 wheel and the audio controls are just sitting there all nice and lit up waiting for something to plug into 😊

Not a bad price for that kind of unit!

ME WANT!

2005 Windveil Blue Mustang GT Coupe

**If you aren't going to stand behind our troops,
please feel free to stand in front of them.**

Quick Reply

Quote

Multi Quote

THANKS



BS Like That



Join Date: August 19, 2004

Posts: 2,006

Cleveland

0 Thanks

Agreed. Aftermarket Nav systems easily cost this much or more. It looks good but I don't think I'd ever put one in the Mustang.

-Justin

2005 Mustang GT - Mineral Grey - 100,000 miles and counting since 11/20/04

Go Mods: C&L Racer, Kooks LT Headers, Steeda delete plates, Brenspeed tune, Flowmaster Axlebacks, MGW Shifter, Prothane Motor Mounts, J&M LCAs

Coming Soon: Gears, Plugs, Tires, Hood, Front Bumper,...?

Quick Reply

Quote

Multi Quote

THANKS



I tweaked the button...
...and got lucky!



Join Date: February 2, 2004

Posts: 5,142

Insane

9 Thanks

houtex

4/8/15, 10:05 PM #20

I would. As long as it sounded good and worked, it looks like the perfect 'look' for the dash. Most of the other units like the Pioneer or JVC or Alpine look sort of out of place to me. I'm sure they work fantastic, but... yeah, just not diggin' them.

houtex

Awesome: My 2006 Mustang GT Coupe, Performance White, Charcoal Interior.
Mods so far: GT/CS Front and Rear Bumpers, HR010 Hot Rod Black lower trim,

Custom Blackened Dash Panels, 2010 GT500 Vert Wheels, GTA Axle-backs, Koni STR.Ts, Eibach GT500 Sway Bars, Ford 1" P Springs, GT500 Front Arms, BMR Poly-Poly LCAs and Panhard, Shelby Grille, Cobra R hood, V6/KR Spoiler, Powered by Ford Badges.
