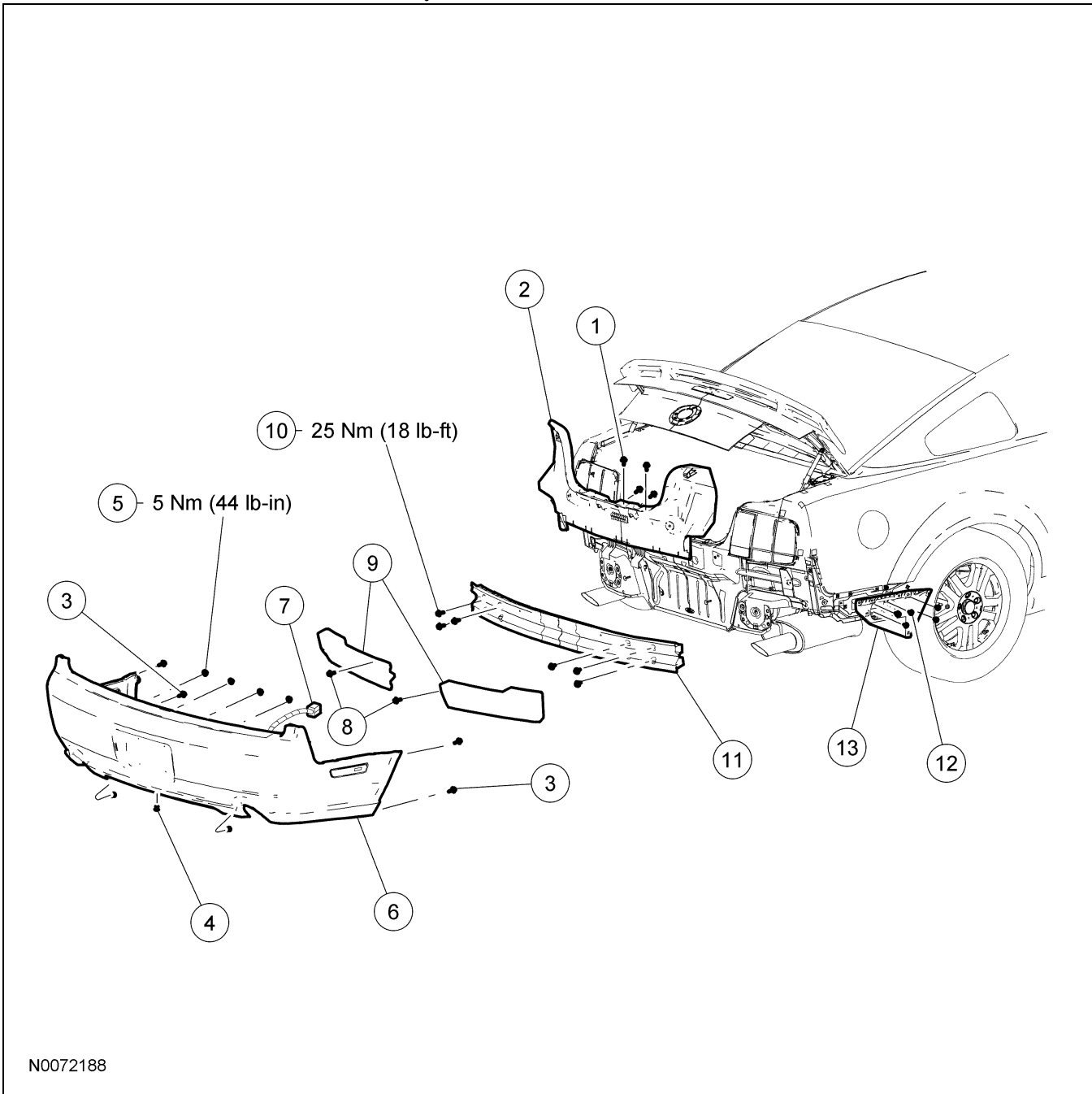


# REMOVAL AND INSTALLATION

## Bumper — Exploded View, Rear

NOTE: Base vehicle and GT shown, Shelby GT 500 similar.



N0072188

Item	Part Number	Description
1	58403D24	Luggage compartment trim panel pin-type retainer (4 required)
2	63424A82	Luggage compartment trim panel

(Continued)

Item	Part Number	Description
3	W712919	Rear bumper cover-to-bumper cover bracket screws (4 required)
4	13A457	Rear bumper cover pin-type retainer (3 required) (if equipped)

(Continued)

**REMOVAL AND INSTALLATION (Continued)**

Item	Part Number	Description
5	N621927	Rear bumper cover nut (4 required)
6	17K835	Rear bumper cover
7	—	Rear bumper cover electrical connector (part of 14489)
8	310D12	Rear bumper isolator pin-type retainers (2 required)
9	17E899 LH/ 17E989 RH	Rear bumper isolators

(Continued)

Item	Part Number	Description
10	W711097	Rear bumper bolt (6 required)
11	17906	Rear bumper
12	W611103	Rear bumper cover bracket bolt (12 required)
13	17D942	Rear bumper cover bracket

1. For additional information, refer to the procedures in this section.