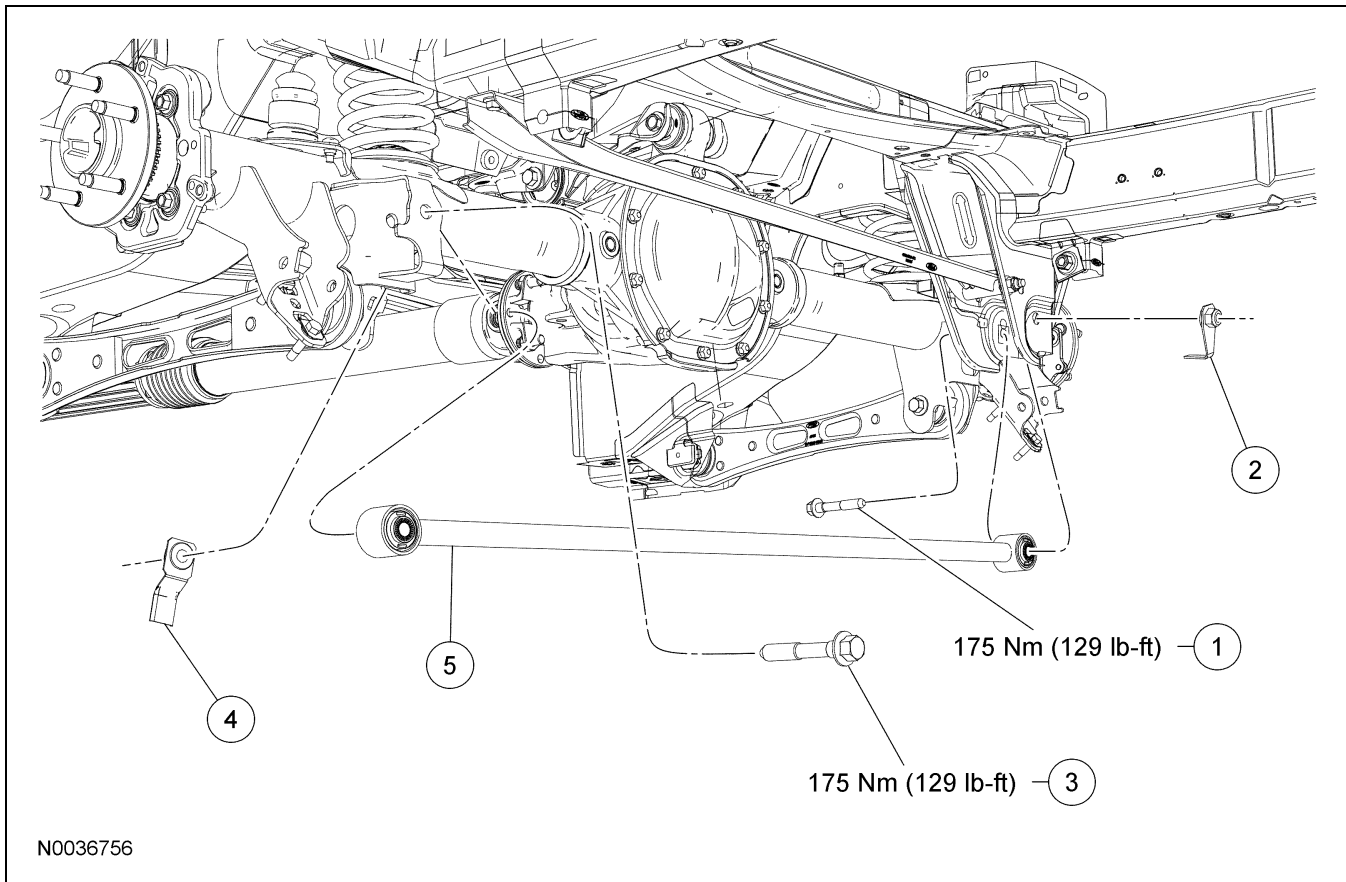


REMOVAL AND INSTALLATION

Panhard Rod



Item	Part Number	Description
1	W704886-S	Panard rod bolt (RH)
2	W710022-S	Panard rod flag nut (RH)
3	W704886-S	Panard rod bolt (LH)

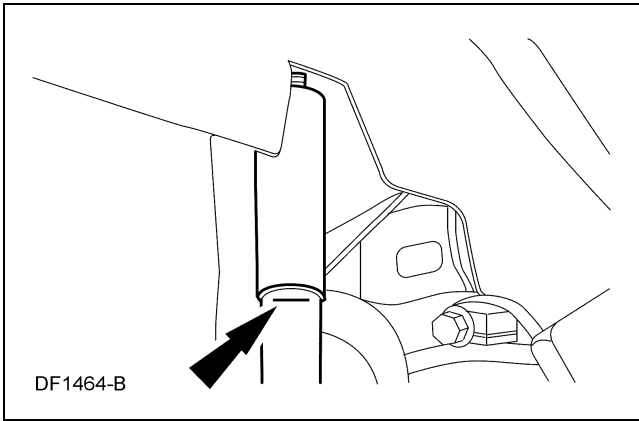
Item	Part Number	Description
4	W710689-S	Panard rod flag nut (LH)
5	4264	Panard rod

(Continued)

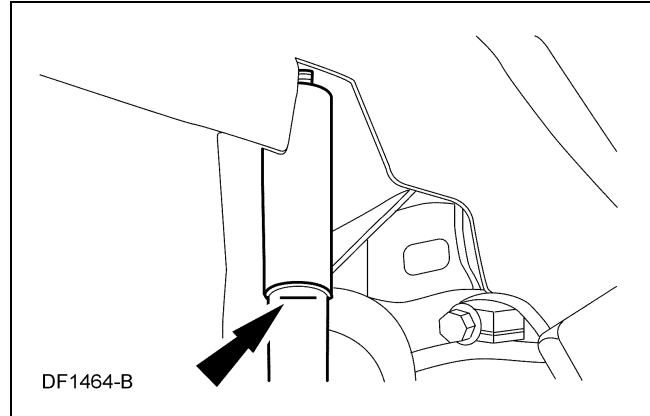
REMOVAL AND INSTALLATION (Continued)**Removal and Installation**

⚠ CAUTION: Suspension fasteners are critical parts because they affect performance of vital parts and systems and their failure can result in major service expense. A new part with the same part number must be installed if installation becomes necessary. Torque values must be used as specified during reassembly to make sure of correct retention of these parts.

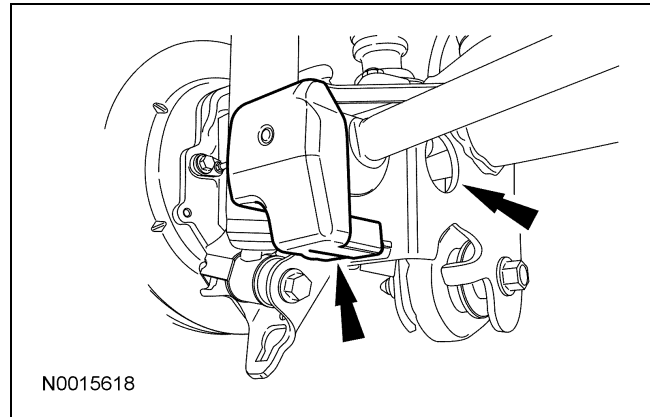
1. To aid in installation, mark the rear shock absorber relative to the protective sleeve with the vehicle in a static, level ground position (curb height).



2. With the vehicle in NEUTRAL, position it on a hoist. For additional information, refer to Section 100-02.
3. **⚠ CAUTION: Do not support the rear axle at the differential housing.**
Using 2 suitable jack stands, support the rear axle.
4. Raise the rear axle so the mark made on the rear shock absorber in Step 1 lines up with the protective sleeve.



5. Using 2 screwdrivers inserted through the access hole, depress the tabs of the panard rod bolt cover retaining clip and remove the cover.



6. Remove and discard the LH panard rod bolt and flag nut.
 - To install, tighten to 175 Nm (129 lb-ft).
7. Remove and discard the RH panard rod bolt and flag nut and remove the panard rod.
 - To install, tighten to 175 Nm (129 lb-ft).
8. **⚠ CAUTION: Tighten the LH and RH panard rod bolts with the suspension at curb height.**
To install, reverse the removal procedure.