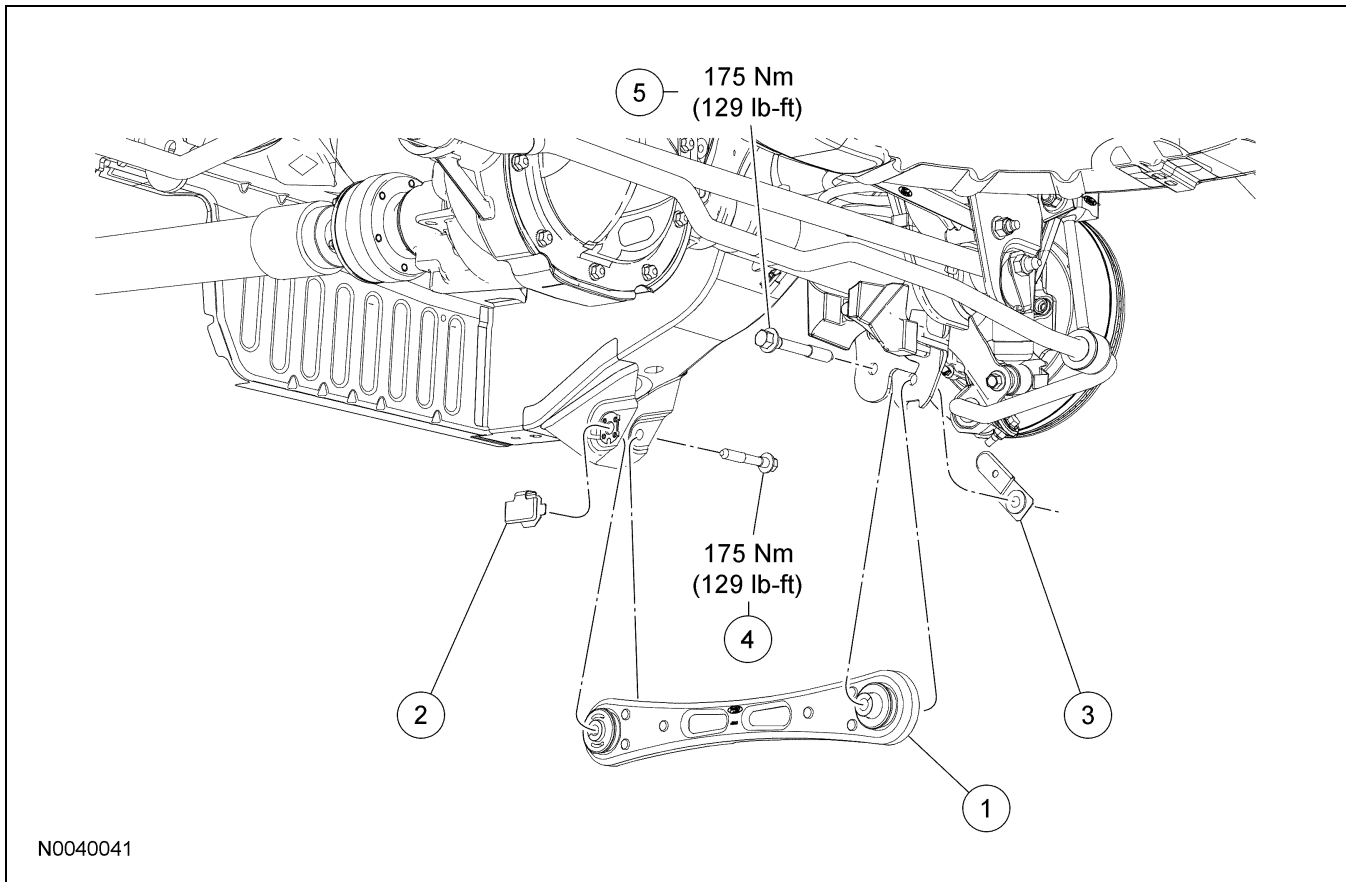


## REMOVAL AND INSTALLATION

### Lower Arm



| Item | Part Number | Description                              |
|------|-------------|--|
| 1    | 5538        | Lower control arm (2 required)           |
| 2    | W710089     | Lower control arm front nut (2 required) |
| 3    | W704991     | Lower control arm rear nut (2 required)  |

(Continued)

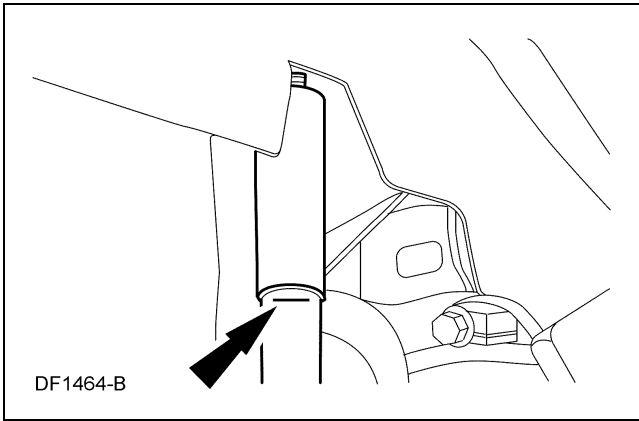
| Item | Part Number | Description                               |
|------|-------------|---|
| 4    | W704886     | Lower control arm front bolt (2 required) |
| 5    | W704888     | Lower control arm rear bolt (2 required)  |

## REMOVAL AND INSTALLATION (Continued)

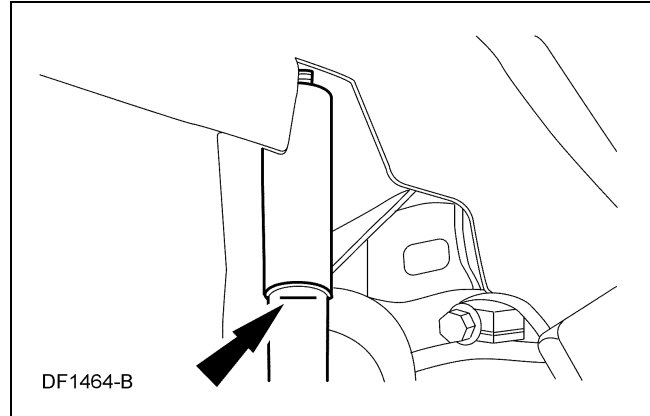
### Removal and Installation

**⚠ CAUTION:** Suspension fasteners are critical parts because they affect performance of vital parts and systems and their failure can result in major service expense. A new part with the same part number must be installed if installation becomes necessary. Torque values must be used as specified during reassembly to make sure of correct retention of these parts.

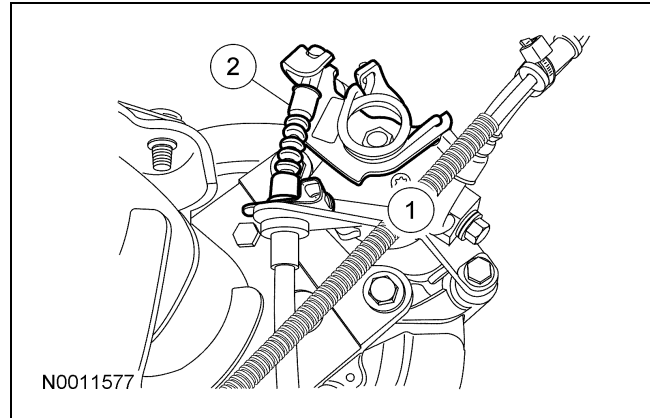
- To aid in installation, mark the rear shock absorber relative to the protective sleeve with the vehicle in a static, level ground position (curb height).



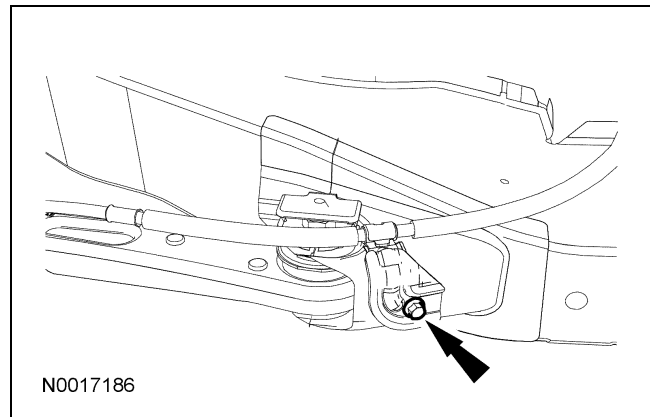
- With the vehicle in NEUTRAL, position it on a hoist. For additional information, refer to Section 100-02.
- ⚠ CAUTION: Do not support the rear axle at the differential housing.**  
Using 2 suitable jack stands, support the rear axle.
- Raise the rear axle so the mark made on the rear shock absorber in Step 1 lines up with the protective sleeve.



- Disconnect the parking brake cable from the rear caliper.
  - Remove the clip.
  - Disconnect the parking brake cable.



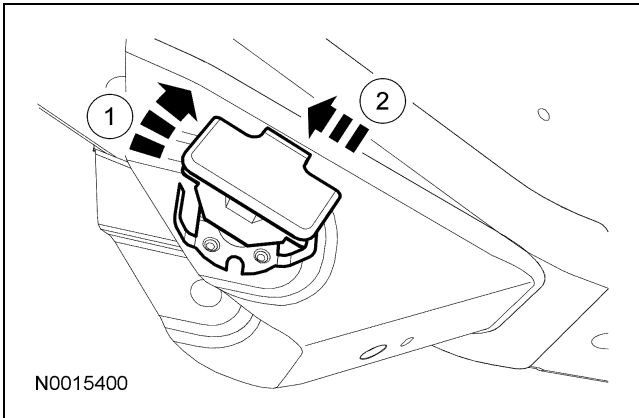
- Remove the parking brake cable bracket bolt.
  - To install, tighten the bolt to 27 Nm (20 lb-ft).



- Remove and discard the lower arm front bolt.
  - To install, tighten to 175 Nm (129 lb-ft).

**REMOVAL AND INSTALLATION (Continued)**

8. Remove and discard the lower arm front nut.
  - 1 Rotate the nut clockwise.
  - 2 Remove and discard the nut.



9. Remove and discard the lower arm rear bolt and flag nut and then remove the lower arm.
  - To install, tighten to 175 Nm (129 lb-ft).
10. ⚠ **CAUTION: Tighten the lower arm bolts while the suspension is at curb height.**  
To install, reverse the removal procedure.