

SECTION 303-01B Engine — 5.0L (4V)

CONTENTS	PAGE
DESCRIPTION AND OPERATION	
Engine	303-01B-2
Engine Identification	303-01B-2
Engine Code Information Label	303-01B-2
Engine Cylinder Identification	303-01B-3
Induction System	303-01B-3
Crankshaft	303-01B-3
Camshafts	303-01B-3
Valve Train	303-01B-3
Twin Independent Variable Camshaft Timing (VCT) System	303-01B-3
PCV System	303-01B-3
Engine Lubrication System	303-01B-3
Oil Pump	303-01B-4
Engine Oil Flow Illustration	303-01B-4

DESCRIPTION AND OPERATION

Engine

The 5.0L (302 CID) is a V-8 engine with the following features:

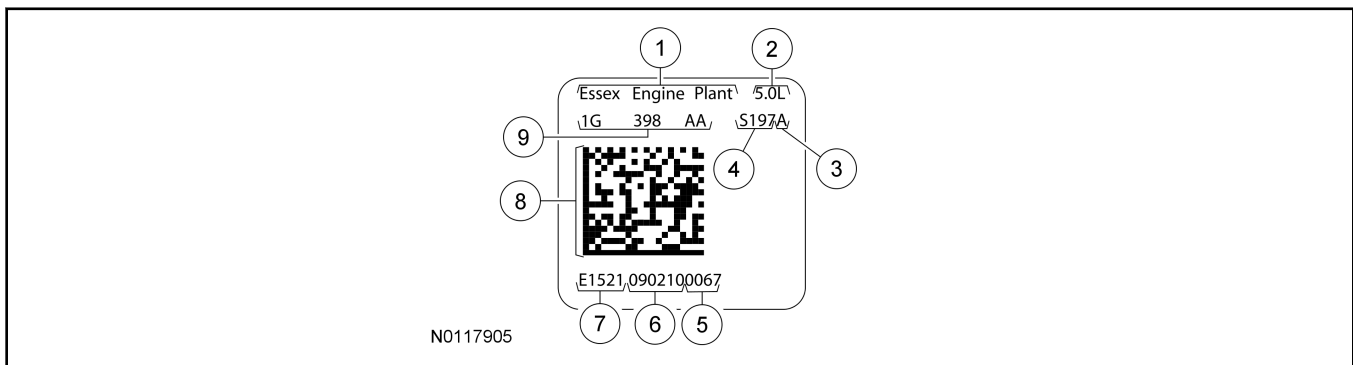
- Dual overhead camshafts
- Four valves per cylinder
- Sequential Multi-Port Fuel Injection (SFI)
- Aluminum cylinder heads
- Aluminum, 90-degree V-cylinder block
- Individually chain-driven camshafts with a hydraulic timing chain tensioner on each timing chain
- Electronic ignition system with 8 ignition coils

Engine Identification

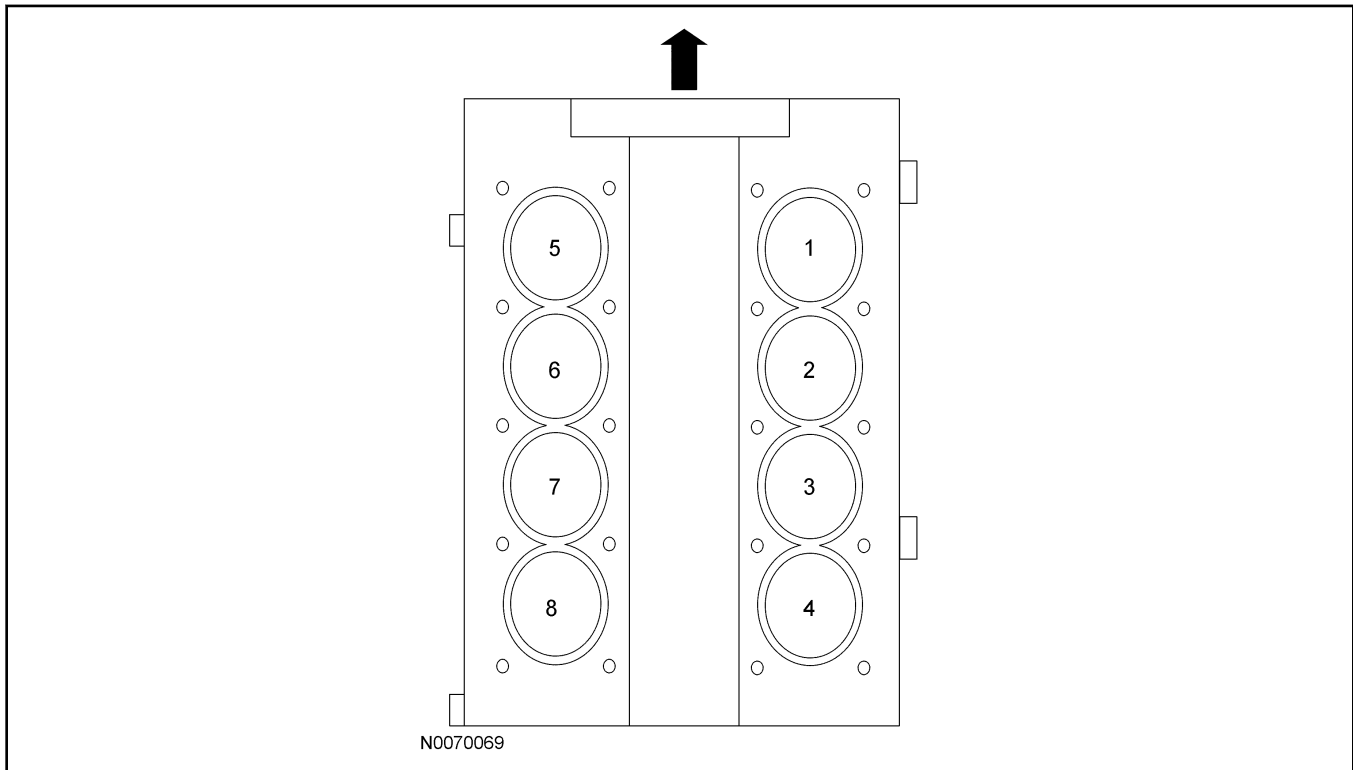
Always refer to these labels when installation of new parts is necessary or when checking engine calibrations. The engine parts often differ within a CID family. Verification of the identification codes will make sure that the correct parts are obtained. These codes contain all the pertinent information relating to the dates, optional equipment and revisions. The Ford Master Parts Catalog contains a complete listing of the codes and their applications.

Engine Code Information Label

The engine code information label, located on the valve cover, contains the following:



Item	Description
1	Essex engine plant
2	Engine displacement
3	Transmission
4	Vehicle line
5	Sequential number
6	Engine build date (DDMMYY)
7	Essex engine plant
8	Bar code
9	Engine part number

DESCRIPTION AND OPERATION (Continued)**Engine Cylinder Identification****Induction System**

The SFI provides the fuel/air mixture needed for combustion in the cylinders. The 8 solenoid-operated fuel injectors:

- are mounted in the fuel injection supply manifold and the intake manifold above the cylinder heads.
- meter fuel into the air intake stream in accordance with engine demand.
- are positioned so that their tips direct fuel just ahead of the engine intake valves.
- supply fuel from the fuel tank by a fuel pump mounted in the fuel tank.

Crankshaft

The crankshaft is supported on the bottom of the cylinder block by 5 crankshaft main bearings.

Camshafts

The camshafts:

- are arranged in pairs, one each (intake and exhaust) on each cylinder head.
- are synchronized through a secondary timing chain.
- depress the roller followers to actuate the valves.

Valve Train

The valves are actuated by a direct acting hydraulic lash adjuster and roller follower. The direct acting hydraulic lash adjusters and roller followers:

- provide hydraulic lash adjustment.
- ride on the camshaft lobes.

Twin Independent Variable Camshaft Timing (VCT) System

The twin independent VCT system allows variable control of intake valve closing which optimizes combustion at full load providing improved power and low speed torque (broadening the torque curve) which enables variable valve overlap which provides better fuel economy and emissions and provides optimized cold start operation with improved exhaust emissions.

PCV System

All engines are equipped with a closed-type PCV system recycling the crankcase vapors to the upper intake manifold.

Engine Lubrication System

The engine lubrication system is of the force-feed type in which oil is supplied under full pressure to the:

DESCRIPTION AND OPERATION (Continued)

- crankshaft main bearings.
- crankshaft thrust main bearing.
- connecting rod bearings.
- oil galleries.

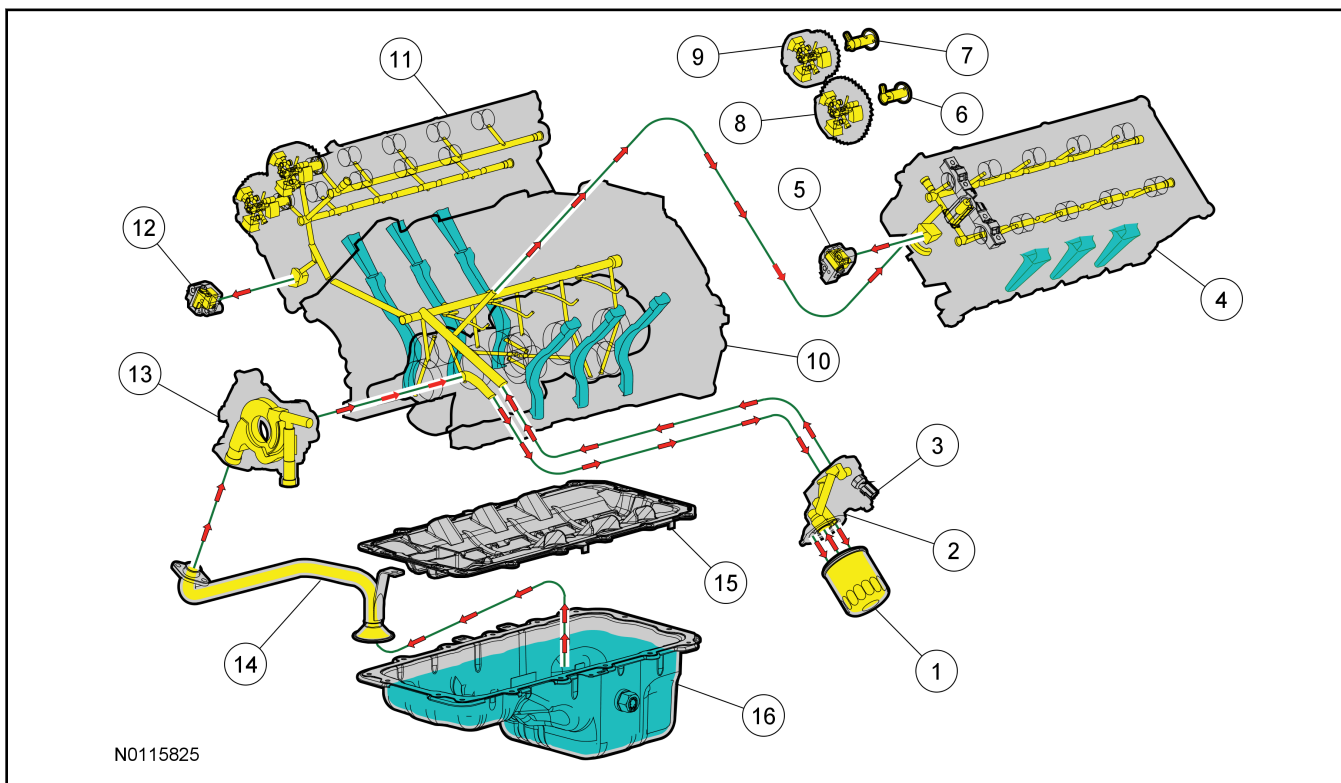
All other parts are lubricated by splash of the oil.

Oil Pump

The lubrication system of the 5.0L (4V) engine is designed to provide optimum oil flow to critical components of the engine through its entire operating range. The heart of the system is a positive displacement internal gear oil pump using top seal rotors.

Generically, this design is known as a gerotor pump, which operates as follows:

- The oil pump is mounted on the front face of the cylinder block.
- The inner rotor is piloted on the crankshaft post and is driven through flats on the crankshaft.
- System pressure is limited by an integral, internally-vented relief valve which directs the bypassed oil back to the inlet side of the oil pump.
- Oil pump displacement has been selected to provide adequate volume to make sure of correct oil pressure both at hot idle and maximum speed.
- The relief valve calibration protects the system from excessive pressure during high viscosity conditions.
- The relief valve is designed to provide adequate connecting rod bearing lubrication under high-temperature and high-speed conditions.

Engine Oil Flow Illustration**Engine Assembly**

Item	Part Number	Description
1	6714	Oil filter
2	6881	Oil filter adapter
3	9278	Engine Oil Pressure (EOP) switch
4	6050	Cylinder head — LH
5	6L266	Timing chain tensioner — LH
6	6A272/6A273	Exhaust camshaft
7	6A270/6A271	Intake camshaft
8	5C524	Exhaust camshaft Variable Camshaft Timing (VCT)

DESCRIPTION AND OPERATION (Continued)

Item	Part Number	Description
9	5C525	Intake camshaft VCT
10	6010	Cylinder block
11	6049	Cylinder head — RH
12	6L266	Timing chain tensioner — RH
13	6621	Oil pump
14	6622	Oil pump screen and pickup tube
15	6C878	Oil pan baffle and gasket
16	6675	Oil pan