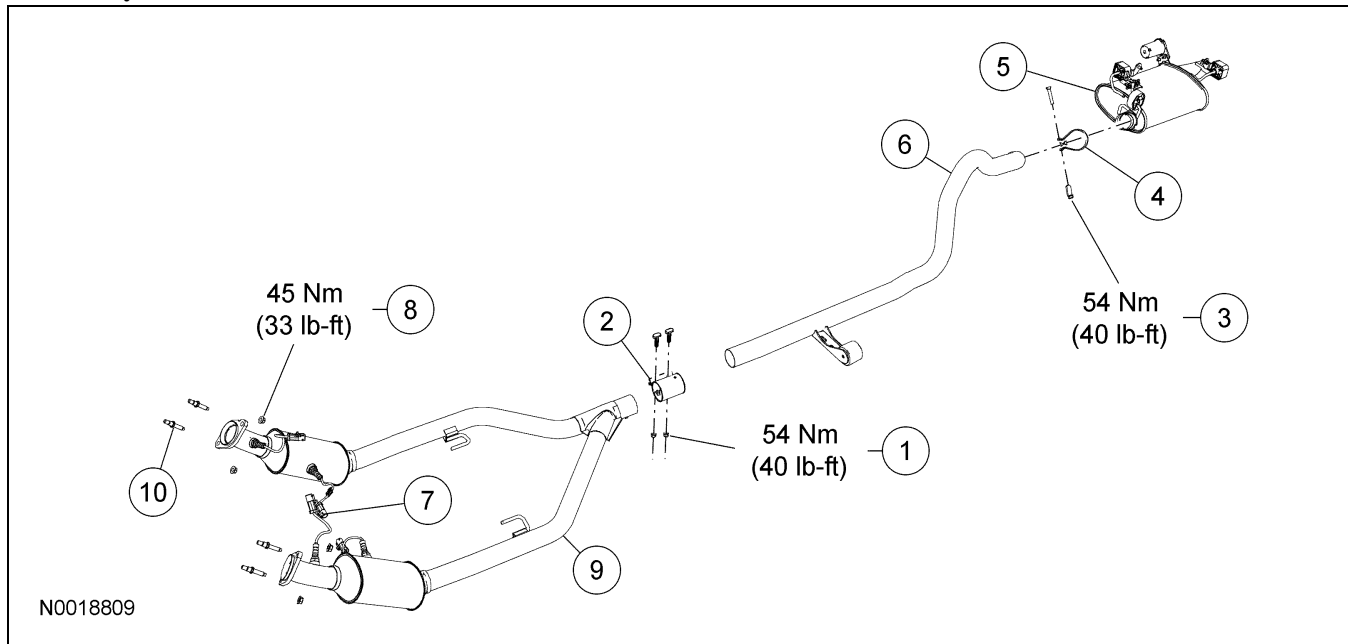


## REMOVAL AND INSTALLATION

### Exhaust System — Exploded View

#### Exhaust System — 4.0L

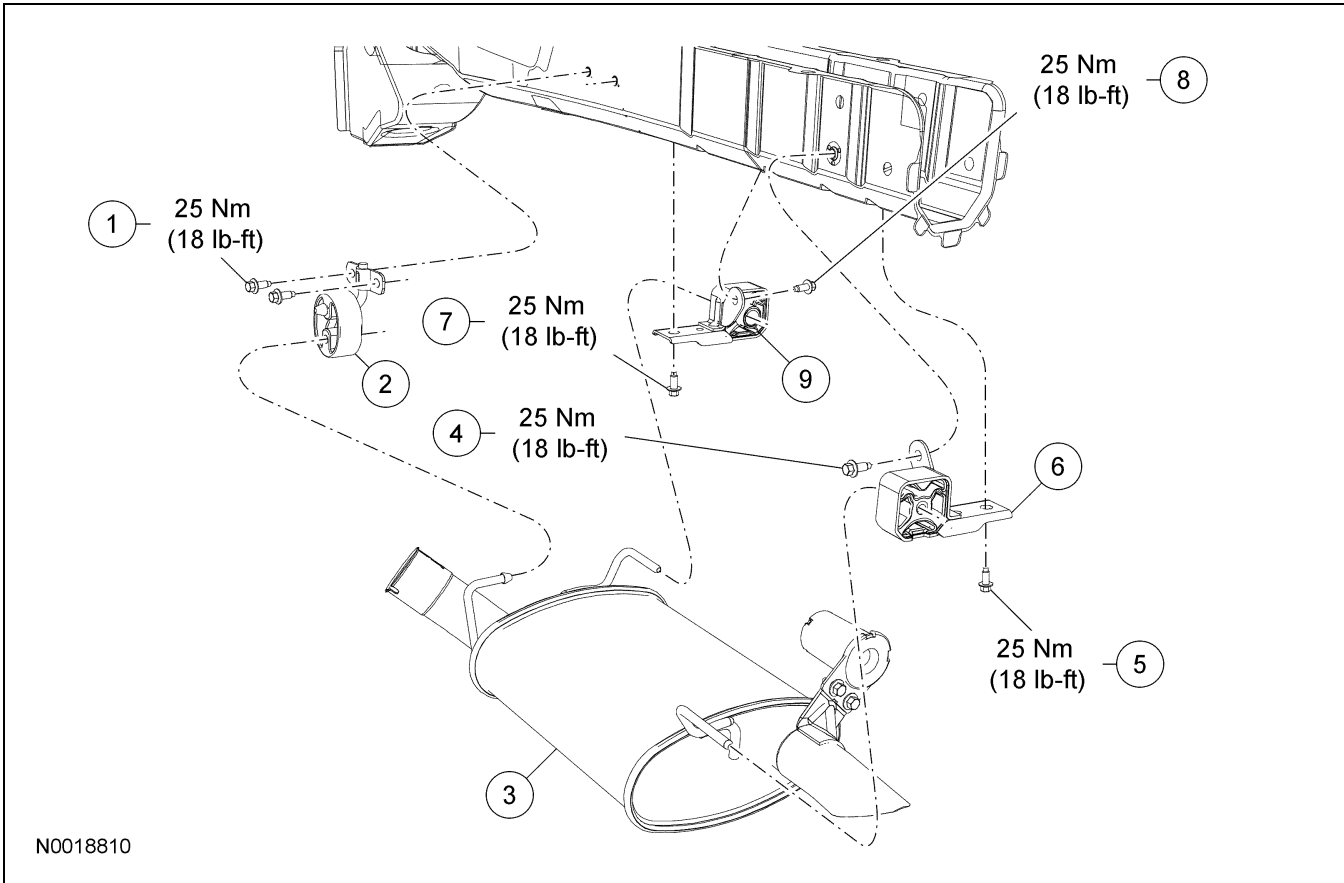


Item	Part Number	Description
1	—	Exhaust coupler nuts (2 required) (part of 5A281)
2	5A281	Exhaust coupler
3	—	Exhaust clamp nut (part of 5230)
4	5270	Exhaust clamp
5	5230	Muffler
6	5A212	Intermediate pipe

Item	Part Number	Description
7	—	HO2S electrical connectors
8	N811485-S	Catalytic converter-to-manifold nuts (4 required)
9	5F250	Catalytic converter assembly (Y-pipe)
10	W709209-S	Exhaust manifold studs (4 required)

(Continued)

**REMOVAL AND INSTALLATION (Continued)**



N0018810

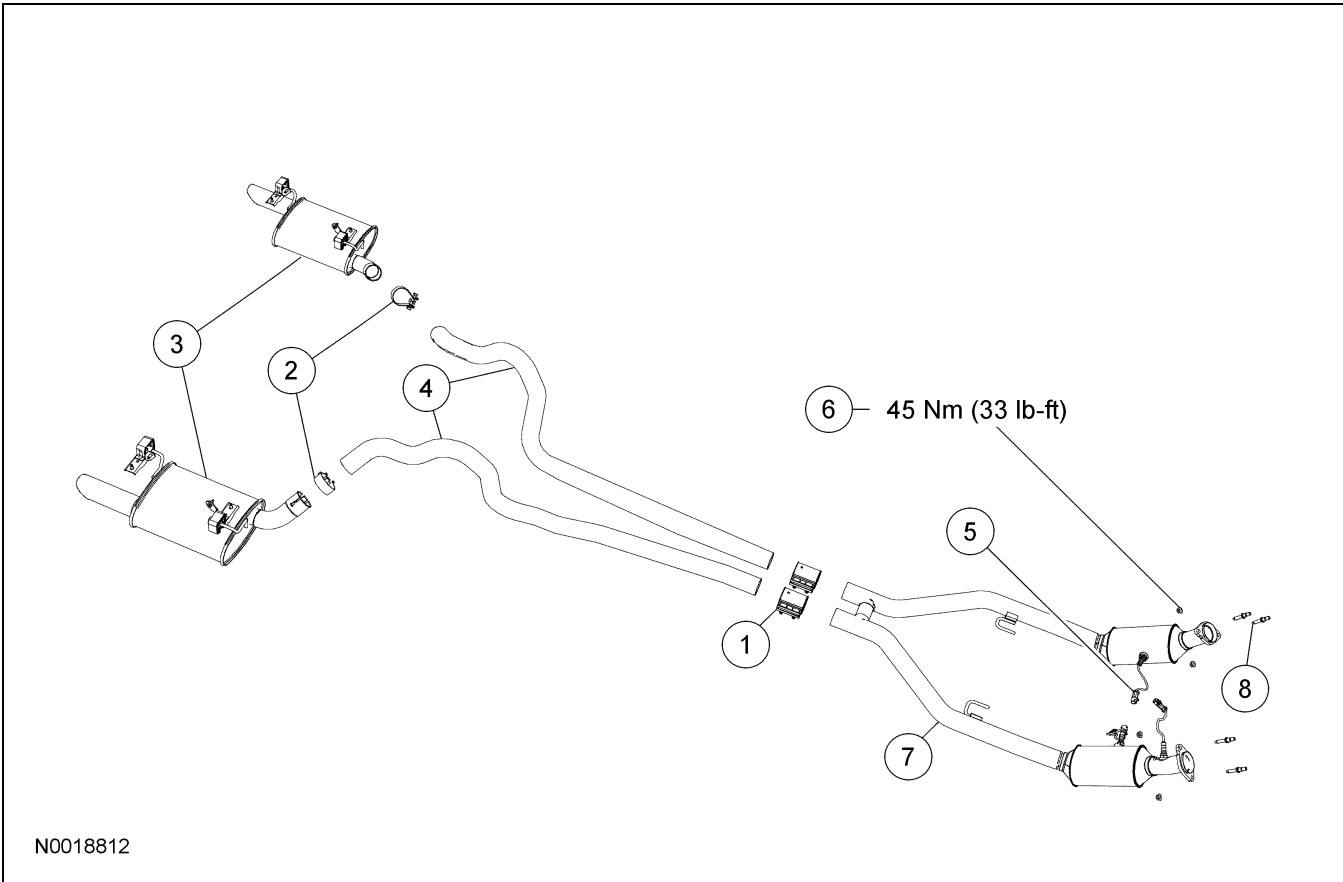
Item	Part Number	Description
1	W707079-S	RH rear isolator bolt (2 required)
2	5A262	RH rear isolator
3	5230	Muffler
4	W707079-S	Front isolator top bolt
5	W707079-S	Front isolator bottom bolt

Item	Part Number	Description
6	5A246	Front isolator
7	W707079-S	LH rear isolator bottom bolt
8	W707079-S	LH rear isolator top bolt
9	5A246	LH rear isolator

(Continued)

**REMOVAL AND INSTALLATION (Continued)**

**Exhaust System — 4.6L**



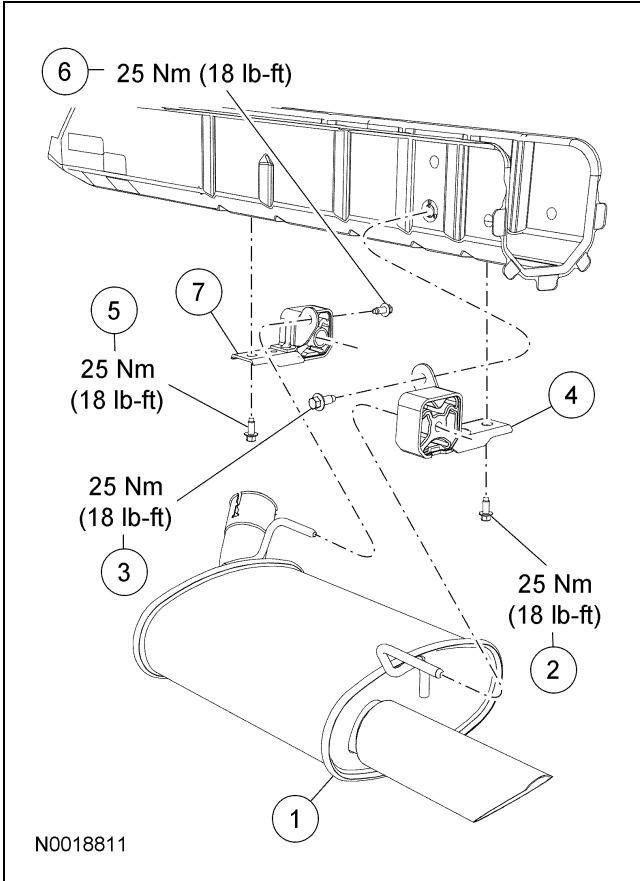
N0018812

Item	Part Number	Description
1	5A281	Exhaust coupler
2	5270	Exhaust clamp
3	5230/5232	Muffler (RH/LH)
4	5A212/5A213	Intermediate pipe (RH/LH)
5	—	HO2S electrical connectors

(Continued)

Item	Part Number	Description
6	N811485-S	Catalytic converter-to-manifold nuts (4 required)
7	5F250	Catalytic converter assembly (H-pipe)
8	W709209-S	Exhaust manifold studs (4 required)

**REMOVAL AND INSTALLATION (Continued)**



Item	Part Number	Description
3	W500222-S	Front isolator top bolt
4	5A246	Front isolator
5	W500222-S	Rear isolator bottom bolt
6	W500222-S	Rear isolator top bolt
7	5A246	Rear isolator

1. For additional information, refer to the procedures in this section.

Item	Part Number	Description
1	5230/5232	Muffler (RH/LH)
2	W500222-S	Front isolator bottom bolt

(Continued)