

cut out along line

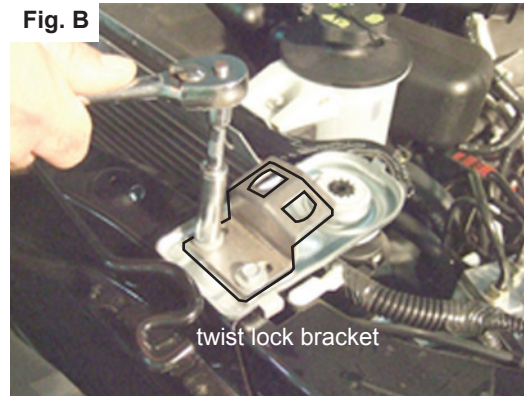
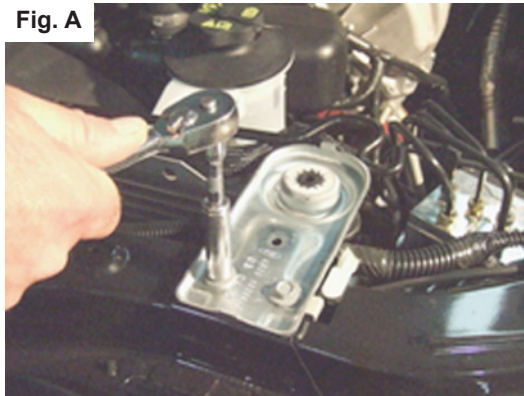
cut out along line

10/08

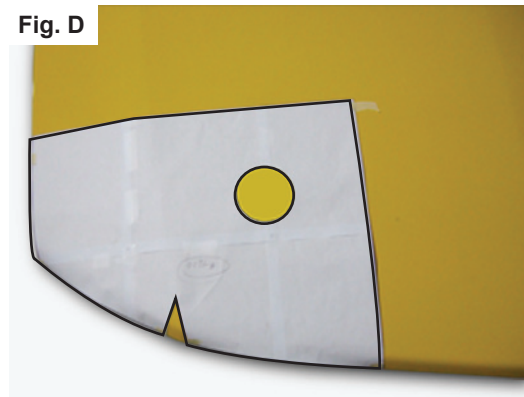
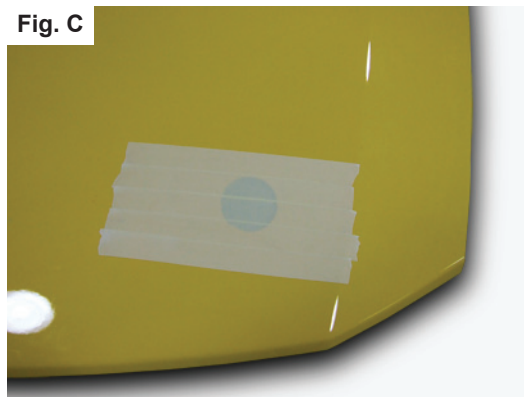
Part # 7100 Twist Lock Instructions for the stock mustang hood

Notice: Painted or Altered Parts are Non-Refundable!
The twist locks are designed to work with the factory latch! They are not to be used as a replacement for the factory latch!

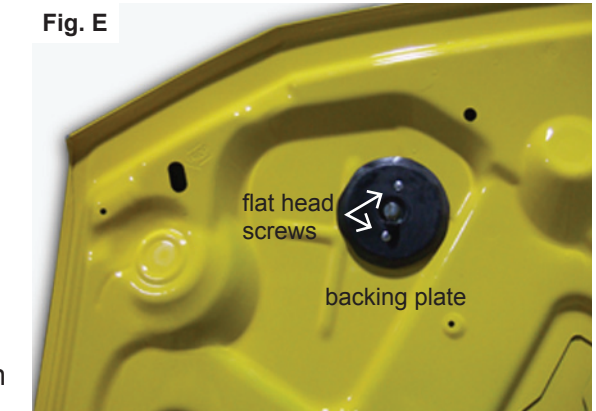
- STEP 1:** Remove the insulator from the bottom of the hood.
- STEP 2:** Remove the upper radiator shield. (See fig. E for picture of the upper radiator shield.)
- STEP 3:** Remove the upper radiator support bracket bolts on both sides of the car as shown in fig.A.
- STEP 4:** Install the twist lock brackets on top of upper radiator support brackets as shown in fig.B. Re-use the factory hardware to secure the brackets. (Do not tighten the bolts at this time.)



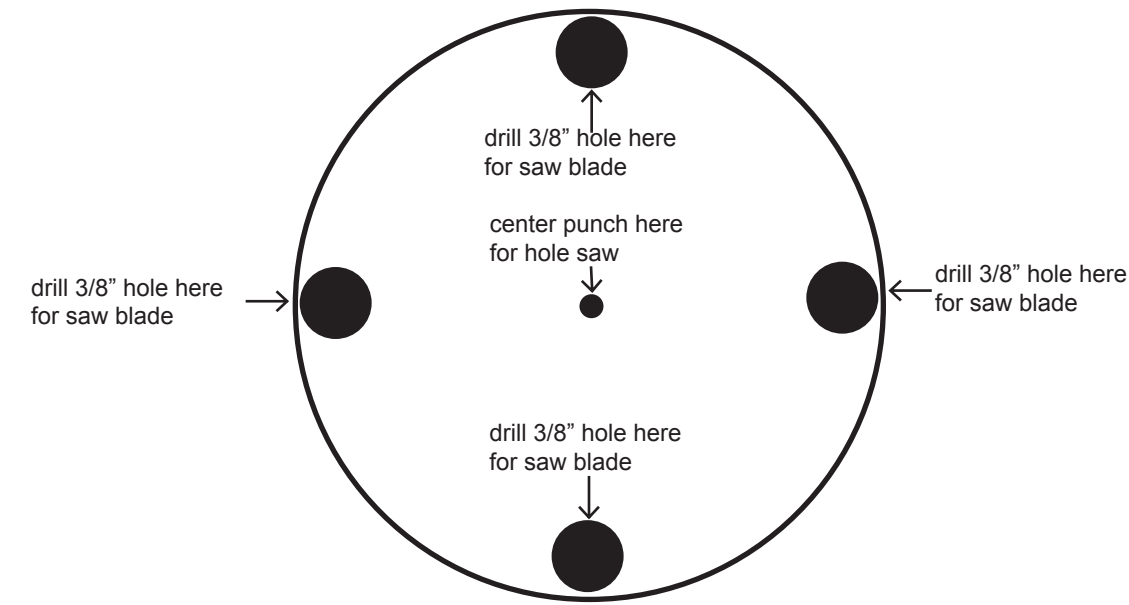
- STEP 5:** Put four layers of tape on the hood around the areas where the holes needs to be cut out as shown in fig.C. This will help to protect the paint from getting scratched. Tape the template to the hood as shown in fig.D. (Flip the template over to use it on the other side.) To use a hole saw, center punch the middle of each hole. Then, drill out the hole with a three inch hole saw. To use an air saw, cut the twist lock hole out of the template and trace the opening onto the hood. Drill four 3/8" holes on the inside edge of the twist lock hole. Insert the saw blade into the 3/8" hole and cut the twist lock hole out of the hood. Cutting from hole to hole. It may be necessary to use a drum sander to clean up the edges of the hole to allow the twist locks to seat properly in the hood. (Be sure to wear all proper safety equipment and eye protection.)



- STEP 6:** Insert the twist locks through the pre-cut holes in the hood. Place a piece of tape over the top of the twist locks so they do not fall out when securing the backing plates. Align the backing plates with the ribs on the underside of the hood as shown in fig.E. The backing plates are labeled left and right. Then, secure them to the bottom of the twist lock with the supplied flat head screws.

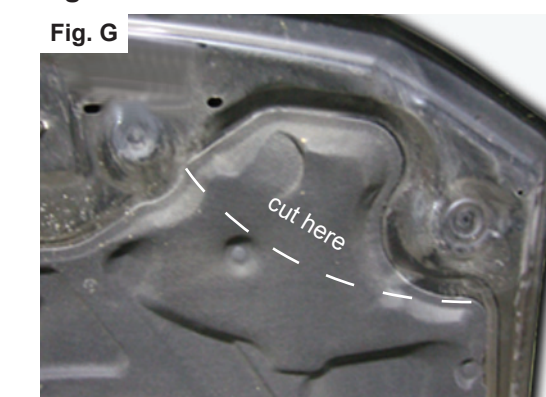


- Step 7:** To align the twist locks to the brackets, close the hood and push down on the top of the twist lock until it bottoms out. Making sure that the pin on the twist lock goes through the top hole in the bracket. Align one side and tighten the bracket. Then do the other side. Once the twist locks are aligned properly, close the hood and **make sure the twist locks are working properly** and keep the hood from lifting up. If the hood has too much up and down play in it or the twist locks are hard to twist and lock in, up and down adjustment is needed. The pin on the twist lock can be screwed in or out depending on the adjustment needed. Screw it in to make the hood close down tighter. Screw it out to reduce the amount of pressure it takes to lock the pin. (Make sure that you do not un-screw the pin to far or the pin may pull out under normal wear and tear.)



- STEP 8:** Cut out the supplied radiator shield template and tape it to the upper radiator shield as shown in fig.F. (Flip the template over to use it on the other side.) Mark on the radiator shield the area that needs to be removed for it to fit over the twist lock brackets. Drill out the corners of the area that needs to be removed and cut it out with an air saw or a razor knife. (Be sure to wear all proper safety equipment and eye protection.) Re-install the radiator shield.

- STEP 9:** Cut the two top corners of the hood insulator as shown in fig.G. Reinstall the hood insulator.



line up with the fender edge of the hood
cut out along line

line up with the front edge of the hood
cut out along line

cut out along line

cut out along line

line up with the front edge of the hood
cut out along line

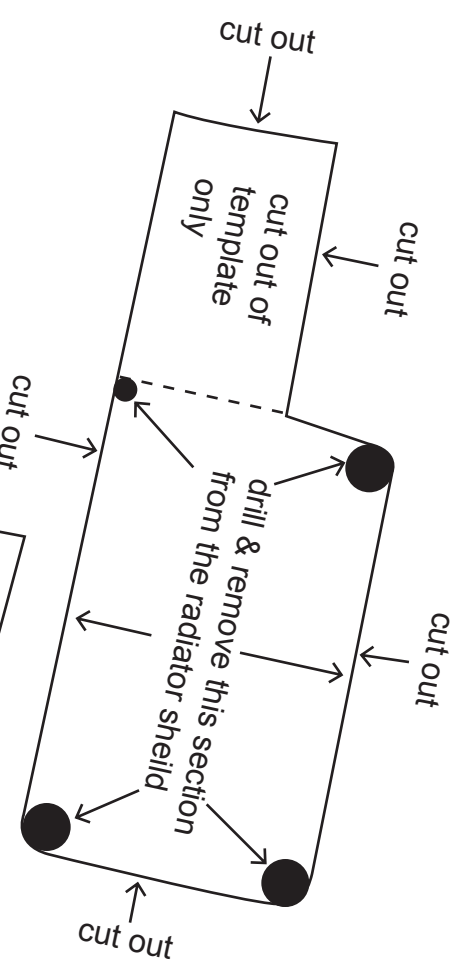
cut out along line

cut out along line

cut out along line

cut out along line

cut out along line



Radiator shield template

PART # 7100		
QTY	DESCRIPTION	HARDWARE #
2	BRACKETS	TEM-056
2	BACKING PLATES	4375-LA-RA
2	TWIST LOCKS	DOZZ068896R
4	FLAT HEAD SCREWS	90271A194

